

WWW.AEASOLUTIONS.IT



WATERWAVE SPAS[®]

WELLNESS AT THE HIGHEST LEVEL



 WATERWAVE-SPAS.COM

HOT TUBS | SWIMSPAS



ABOUT WATERWAVE SPAS

WHO ARE WE AND WHAT DO WE DO?

Welcome to Waterwave Spas®, a company that has redefined the concept of high-quality wellness experiences since its inception in 2013. Our goal has always been to create a product that not only meets the highest quality standards but also remains affordable for our customers. Over the past years, we have risen to this challenge and are proud to have achieved it. Today, Waterwave Spas® represents wellness at the highest level, with an outstanding price-performance ratio, driven by our CEO Wolfgang Rutter, the owner and heart of our company.

With multi-million investments, we are committed to European quality standards, offering our customers products that not only meet but exceed these standards. With five company-owned showrooms in Austria, a strong presence in 16 European countries, and the American market, we are one of the leading providers in the wellness industry. Choosing Waterwave Spas® means becoming part of a family that places quality, innovation, and customer satisfaction at the forefront.



TESTING & DEVELOPMENT CENTER



DESIGNED & APPROVED IN
AUSTRIA

Our commitment to quality and innovation is reflected in our Testing and Development Center. Here, we focus on the continuous development and improvement of our pool models. Tailored to the desires and requirements of our customers, we subject each pool to extensive testing before it is delivered. This process ensures that every product meets our high standards, allowing our customers to enjoy an unparalleled wellness experience.

ASSEMBLY CENTER

In the final assembly, we give our products the finishing touches. Here, all the extras that our customers choose when purchasing a Waterwave Spas® Hot Tub or SwimSpa are carefully installed and assembled. From high-quality sound systems to efficient salt systems and modern UV systems – every detail is handled with the utmost care to ensure the ultimate wellness experience.





OUR CENTRAL WAREHOUSE

Thanks to the continuous expansion of our storage capacities, we now offer a wide range of Hot Tub and SwimSpa models. Our assortment ranges from the compact 2-person Hot Tub to the most extensive SwimSpa, ensuring there is a suitable model for every preference and need. Additionally, we always keep a variety of spare parts and additional products on hand to keep delivery times short and our service efficient. This approach not only minimizes inconvenience and transportation costs but also contributes to environmental protection. A central element of our warehouse management is daily shipping. Every day, numerous pools leave our warehouse to make their way to our customers in various parts of the world. This constant stream of deliveries reflects our commitment to delivering top-quality products promptly and safely to their new owners. Each pool that leaves our warehouse is further proof of our promise to bring quality and satisfaction directly to your home. Our factory customer service is also always ready to provide support with technical questions or issues. With expertise and experience, our specialists ensure that every concern is handled with the utmost care and efficiency.





S ₁₀	ELITE SERIES
S ₂₆	DESIGN SERIES
S ₄₀	OVERFLOW SERIES
S ₄₆	GOLD SERIES
S ₆₂	CHROM SERIES
S ₇₄	BASIC SERIES
S ₉₀	I-ZONE SWIMSPAS
S ₁₁₆	2-ZONE SWIMSPAS
S ₁₂₆	TECHNOLOGY & FEATURES
S ₁₃₂	CLADDING & COLORS
S ₁₃₄	COVERS & LIFTERS
S ₁₃₆	STEPS & ACCESSORIES
S ₁₃₈	MASSAGES



ELITE SERIES

FIND YOUR INNER BALANCE

In today's hectic world, there is hardly anything more beautiful than a private retreat to relax. Immerse yourself in a hot tub from the Elite Series. A place to bring body and soul back into harmony or to simply bubble away stress and worries. The Elite Series features six spa models equipped with up to 3 powerful massage pumps, the gentle air blower with aromatherapy, and the LED color play that activates all senses. A skin-friendly and modern water treatment system, consisting of UV disinfection supported by an ozonator system, guarantees clean water with little effort. Energy-efficient, warm, always clean, and filled with crystal-clear water, the hot tubs of the Elite Series are both a haven of peace and a source of strength.



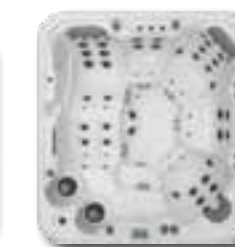
Montreal



Toronto



Ottawa



Hamilton



Vancouver



Levis

MONTREAL

ELITE SERIES MODEL PE865

DETAILS MONTREAL



THE „GIANT“ FROM THE WATERWAVE SPAS ELITE SERIES. EQUIPPED WITH TWO LOUNGERS, THREE SEATS, NECK MASSAGE, FOOT MASSAGE, AND ILLUMINATED HANDRAILS, THIS MODEL LEAVES NOTHING TO BE DESIRED.

Dimensions:	230 x 230 x 91 cm 91 x 91 x 36 inches	UV Disinfection:	Included
Empty Weight:	380 kg // 838 lbs	Foot Massage:	Included
Water Capacity:	1,819 liters // 481 gal	Neck Massage:	Included
Total Weight:	2.199 kg // 4.848 lbs	LED Waterline Lighting:	Included
Cladding:	Design Cabinet	LED Underwater Lights:	Included
Seats:	3	Water Fountains:	Included
Loungers:	2	Water Play:	Included
Water Jets:	59	Waterfall:	Included
Frame:	Stainless Steel Frame	Handrail:	Included
Insulation:	Xtreme Insulation		
Control:	Balboa		
Control Panel:	Spatouch		
Water Pump:	1 x 3 HP (2-stage) + 2 x 3 HP (1-stage)		
Circulation Pump:	Silent Wave Eco		
Ozonator:	Included		
Water Drain:	Included		
Filters:	2 x Papers Filters		
Heater:	3 KW Balboa		
Electrical Requirements:	400V / 3 x 16A		

Optional

- Air Blower & Aromatherapy
- Waterwave Sound System
- LED Ambient Light
- Single Control Button
- Waterwave Select Cabinet
- WiFi Control System
- Hydrospeed Massage
- Waterwave Clear Salt System
- Preparation for External Access (e.g., Air/Heat Pump)

TORONTO

ELITE SERIES MODEL PE752

DETAILS TORONTO



THE MOST POPULAR AND BELOVED MODEL FROM THE WATERWAVE SPAS ELITE SERIES. IDEAL FOR THE WHOLE FAMILY. RELAXATION AT THE PUSH OF A BUTTON – GUARANTEED!

Dimensions:	214 x 214 x 91 cm 84 x 84 x 36 inches
Empty Weight:	360 kg // 794 lbs
Water Capacity:	1.419 liters // 378 gal
Total Weight:	1.779 kg // 3.922 lbs
Cladding:	Design Cabinet
Seats:	5
Loungers:	1
Water Jets:	57
Frame:	Stainless Steel Frame
Insulation:	Xtreme Insulation
Control:	Balboa
Control Panel:	Spatouch
Water Pump:	1 x 3 HP (2-stage) + 2 x 3 HP (1-stage)
Circulation Pump:	Silent Wave Eco
Ozonator:	Included
Water Drain:	Included
Filters:	2 x Papers Filters
Heater:	3 KW Balboa
Electrical Requirements:	400V / 3 x 16A

UV Disinfection:	Included
Foot Massage:	Included
Neck Massage:	Included
LED Waterline Lighting:	Included
LED Underwater Lights:	Included
Water Fountains:	Included
Water Play:	Included
Waterfall:	Included
Handrail:	Included

- Optional**
- Air Blower & Aromatherapy
 - Waterwave Sound System
 - LED Ambient Light
 - Single Control Button
 - Waterwave Select Cabinet
 - WiFi Control System
 - Hydrospeed Massage
 - Waterwave Clear Salt System
 - Preparation for External Access (e.g., Air/Heat Pump)

OTTAWA

ELITE SERIES MODEL PL742L

DETAILS OTTAWA



THE OTTAWA MODEL IMPRESSES NOT ONLY WITH ITS PERFECTLY DESIGNED LINES BUT ALSO WITH THE TWO PERFECTLY CONTOURED RECLINING AREAS THAT FIT THE BODY.

Dimensions:	214 x 214 x 91 cm
Empty Weight:	360 kg // 794 lbs
Water Capacity:	1.419 liters // 378 gal
Total Weight:	1.779 kg // 3.922 lbs
Cladding:	Design Cabinet
Seats:	2
Loungers:	2
Water Jets:	55
Frame:	Stainless Steel Frame
Insulation:	Xtreme Insulation
Control:	Balboa
Control Panel:	Spatouch
Water Pump:	1 x 3 HP (2-stage) + 2 x 3 HP (1-stage)
Circulation Pump:	Silent Wave Eco
Ozonator:	Included
Water Drain:	Included
Filters:	2 x Papers Filters
Heater:	3 KW Balboa
Electrical Requirements:	400V / 3 x 16A

UV Disinfection:	Included
Foot Massage:	Included
Neck Massage:	Included
LED Waterline Lighting:	Included
LED Underwater Lights:	Included
Water Fountains:	Included
Water Play:	Included
Waterfall:	Included
Handrail:	Included

- Optional**
- Air Blower & Aromatherapy
 - Waterwave Sound System
 - LED Ambient Light
 - Single Control Button
 - Waterwave Select Cabinet
 - WiFi Control System
 - Hydrospeed Massage
 - Waterwave Clear Salt System
 - Preparation for External Access (e.g., Air/Heat Pump)

HAMILTON

ELITE SERIES MODEL PE644

DETAILS HAMILTON



ANOTHER HIGHLIGHT FROM THE WATERWAVE SPAS ELITE SERIES. THIS HOT TUB MODEL OFFERS AMPLE SPACE FOR 2-3 PEOPLE. A STEP ALLOWS FOR SAFE ENTRY AND EXIT.

Dimensions:	214 x 198 x 86 cm 84 x 78 x 34 inches
Empty Weight:	320 kg // 706 lbs
Water Capacity:	1.250 liters // 330 gal
Total Weight:	1.570 kg // 3.461 lbs
Cladding:	Design Cabinet
Seats:	4
Loungers:	1
Water Jets:	52
Frame:	Stainless Steel Frame
Insulation:	Xtreme Insulation
Control:	Balboa
Control Panel:	Spatouch
Water Pump:	1 x 3 HP (2-stage) + 2 x 3 HP (1-stage)
Circulation Pump:	Silent Wave Eco
Ozonator:	Included
Water Drain:	Included
Filters:	2 x Papers Filters
Heater:	3 KW Balboa
Electrical Requirements:	400V / 3 x 16A

UV Disinfection:	Included
Foot Massage:	Included
Neck Massage:	Included
LED Waterline Lighting:	Included
LED Underwater Lights:	Included
Water Fountains:	Included
Water Play:	Included
Waterfall:	Included
Handrail:	Included

Optional

- Air Blower & Aromatherapy
- Waterwave Sound System
- LED Ambient Light
- Single Control Button
- Waterwave Select Cabinet
- WiFi Control System
- Hydrospeed Massage
- Waterwave Clear Salt System
- Preparation for External Access (e.g., Air/Heat Pump)

VANCOUVER

ELITE SERIES MODEL PE65 I

DETAILS VANCOUVER



THE VANCOUVER MODEL IS A TRUE SPACE MARVEL!
ITS SOPHISTICATED TUB DESIGN PROVIDES AMPLE
SPACE, MAKING IT IDEAL FOR SMALLER AREAS.

Dimensions:	215 x 165 x 86 cm 85 x 65 x 34 inches
Empty Weight:	290 kg // 639 lbs
Water Capacity:	850 liters / 225 gal
Total Weight:	1.140 kg // 2.513 lbs
Cladding:	Design Cabinet
Seats:	1
Loungers:	2
Water Jets:	46
Frame:	Stainless Steel Frame
Insulation:	Xtreme Insulation
Control:	Balboa
Control Panel:	Spatouch
Water Pump:	1 x 3 HP (2-stage) + 1 x 3 HP (1-stage)
Circulation Pump:	Silent Wave Eco
Ozonator:	Included
Water Drain:	Included
Filters:	1 x Papers Filter
Heater:	3 KW Balboa
Electrical Requirements:	400V / 3 x 16A

UV Disinfection:	Included
Foot Massage:	Included
Neck Massage:	Included
LED Waterline Lighting:	Included
LED Underwater Lights:	Included
Water Play:	Included
Waterfall:	Included
Handrail:	Included

Optional

- Waterwave Sound System
- LED Ambient Light
- Single Control Button
- Waterwave Select Cabinet
- WiFi Control System
- Hydrospeed Massage
- Waterwave Clear Salt System
- Preparation for External Access (e.g., Air/Heat Pump)



THE SMART LEVIS MODEL FROM THE WATERWAVE SPAS ELITE SERIES IMPRESSES WITH A HIGH SPACE OFFERING IN A SMALL AREA. UP TO 3 PEOPLE CAN RELAX SIMULTANEOUSLY AND BE ENCHANTED BY THE PLEASANT DESIGN LEDS.

Dimensions:	215 x 165 x 82 cm 85 x 65 x 32 inches
Empty Weight:	290 kg // 639 lbs
Water Capacity:	850 liters / 225 gal
Total Weight:	1.140 kg // 2.513 lbs
Cladding:	Design Cabinet
Seats:	2
Loungers:	1
Water Jets:	40
Frame:	Stainless Steel Frame
Insulation:	Xtreme Insulation
Control:	Balboa
Control Panel:	Spatouch
Water Pump:	1 x 3 HP (2-stage) + 1 x 3 HP (1-stage)
Circulation Pump:	Silent Wave Eco
Ozonator:	Included
Water Drain:	Included
Filters:	1 x Papers Filter
Heater:	3 KW Balboa
Electrical Requirements:	400V / 3 x 16A

UV Disinfection:	Included
Foot Massage:	Included
Neck Massage:	Included
LED Waterline Lighting:	Included
LED Underwater Lights:	Included
Water Play:	Included
Waterfall:	Included
Handrail:	Included

Optional

- Air Blower & Aromatherapy
- Waterwave Sound System
- LED Ambient Light
- Single Control Button
- Waterwave Select Cabinet
- WiFi Control System
- Hydrospeed Massage
- Waterwave Clear Salt System
- Preparation for External Access (e.g., Air/Heat Pump)

THE WATERWAVE SPAS ELITE SERIES

All 8 highlights at a glance ...



1.

STAINLESS STEEL FRAME

The frame of the Waterwave Spas models consists of a stainless steel base frame and stainless steel supports, which provide the pool with additional stability. The UV-resistant outer cladding is supported by a wooden frame, which greatly reduces vibrations and minimizes external noise.



2.

SILENT WAVE ECO PUMP

Discover the SILENT Wave Eco Pump from Waterwave Spas® – one of the most efficient circulation pumps currently available on the market. This innovative pump sets new standards in energy efficiency and is significantly more economical in consumption than conventional models. Its exceptionally quiet operation makes it an ideal companion for any spa area, even on rooftops where peace and quiet are especially valued.



3.

XTREME ISOLATION

With the most advanced thermal insulation, you get the optimal combination of insulation and efficiency. Thanks to Xtreme Isolation, the pool is extremely energy-saving and environmentally friendly. In case of need, the insulation can be easily repaired. The 4 cm thick PEV panels (encased in a chrome-coated dual air chamber foil) provide excellent insulation results.



4.

DESIGN CABINET

Give your spa even more exclusivity. Our stunning design cladding, available in two attractive color options, sets new standards in design and durability, giving your hot tub an unparalleled, modern look that stands out as a true highlight in any setting.



Design Grey



Design Brown



5.

EXTRA-STRONG THERMOCOVER

The pools of the Waterwave Spas Elite Series are equipped with a Thermocover that is 50% stronger. At its thickest point, it measures a full 15 cm, making it one of the most energy-efficient covers on the market. The Thermocover ensures excellent coverage and minimal heat loss.



6.

OZONATOR & UV DISINFECTION

The Waterwave Spas Elite Series offers two valuable elements to ensure the purity of your water: the ozonator and UV disinfection. This means you will need fewer water care products, and even the most sensitive skin can enjoy the bathing experience without any issues.



7.

WATERWAVE SPAS TOUCH DISPLAY

The latest generation of hot tub controls has been incorporated into the Waterwave Spas Elite Series. With the SpaTouch control from „Balboa,“ you can operate your pool with ease. Additionally, this type of control can be equipped with a WiFi module, allowing you to control the pool remotely.



8.

HIGH-QUALITY JET SELECTION

All Waterwave Spas are equipped with only high-quality jet components. The pools in the Waterwave Spas Elite Series feature a variety of different massage jets, such as acupuncture and roto-massage jets (available in 3-5 inches). This ensures the relief of tension from the neck to the toes.



THE CROWN JEWEL OF WATERWAVE SPAS

... and that's not all!



DESIGN SERIES

PERFECTLY CRAFTED LINES

Style enthusiasts will be delighted with the Waterwave Spas Design Series. The straight lines combined with ergonomic loungers and seats make every heart beat faster. The luxurious ambience is highlighted by extravagant exterior lighting, with colors that can be changed according to your preference. The LED waterline lighting creates an atmospheric play of color and light in the water. Let yourself be enchanted and immerse yourself in a hot tub from the Waterwave Spas Design Series.



Alaska



Nizza II



Jackson



London



Richmond



Columbus

ALASKA

DESIGN SERIES MODEL DE1000

DETAILS ALASKA



THE ALASKA DESIGN MODEL, EQUIPPED WITH ELEGANT ALUMINUM CLADDING, AMBIENT LIGHTING, AND THE DESIGN SOUND SYSTEM WITH POP-UP SPEAKERS AT THE PUSH OF A BUTTON, LEAVES NOTHING TO BE DESIRED. PURE ENJOYMENT AND LUXURY!

Dimensions:	230 x 230 x 92 cm 91 x 91 x 36 inches
Empty Weight:	380 kg // 838 lbs
Water Capacity:	1.819 liters // 48l gal
Total Weight:	2.199 kg // 4.848 lbs
Cladding:	Design Cabinet
Seats:	2
Loungers:	2
Water Jets:	67
Frame:	Stainless Steel Frame
Insulation:	Xtreme Insulation
Control:	Balboa
Control Panel:	Spatouch
Water Pump:	1 x 3 HP (2-stage) + 2 x 3 HP (1-stage)
Circulation Pump:	Silent Wave Eco
Ozonator:	Included
Water Drain:	Included
Filters:	2 x Papers Filters
Heater:	3 KW Balboa
Electrical Requirements:	400V / 3 x 16A

UV Disinfection:	Included
Foot Massage:	Included
Neck Massage:	Included
LED Waterline Lighting:	Included
LED Underwater Lights:	Included
Water Fountains:	Included
Waterfall:	Included
Handrail:	Included

- Optional**
- Air Blower & Aromatherapy
 - Waterwave Sound System
 - LED Ambient Light
 - Single Control Button
 - WiFi Control System
 - Waterwave Clear Salt System
 - Preparation for External Access (e.g., Air/Heat Pump)

NIZZA II

DESIGN SERIES MODEL WA710

DETAILS NIZZA II



FOR THOSE WHO WANT SOMETHING EXTRAVAGANT, THE NIZZA II HOT TUB MODEL IMPRESSES WITH ITS PERFECTLY CRAFTED DESIGN, NUMEROUS LED COLOR OPTIONS, AND THE UNIQUE WAVE DESIGN WATERFALL.

Dimensions:	230 x 230 x 92 cm 91 x 91 x 36 inches
Empty Weight:	350 kg // 772 lbs
Water Capacity:	1.500 liters // 396 gal
Total Weight:	1.850 kg // 4.079 lbs
Cladding:	Design Cabinet
Seats:	4
Double Lounger Seat:	1
Water Jets:	42
Frame:	Stainless Steel Frame
Insulation:	Xtreme Insulation
Control:	Balboa
Control Panel:	Spatouch
Water Pump:	1 x 3 HP (2-stage) + 2 x 3 HP (1-stage)
Circulation Pump:	Silent Wave Eco
Ozonator:	Included
Water Drain:	Included
Filters:	2 x Papers Filters
Heater:	3 KW Balboa
Electrical Requirements:	400V / 3 x 16A

UV Disinfection:	Included
LED Waterline Lighting:	Included
LED Underwater Lights:	Included
Wave Design Waterfall:	Included

- Optional**
- Air Blower & Aromatherapy
 - Waterwave Sound System
 - LED Ambient Light
 - WiFi Control System
 - Waterwave Clear Salt System
 - Preparation for External Access (e.g., Air/Heat Pump)

JACKSON

DESIGN SERIES MODEL WL52I

DETAILS JACKSON



AN OUTSTANDING MODEL IN OUR RANGE, THE JACKSON PROVIDES STUNNING VIEWS IN ANY SETTING. WITH ITS TIMELESS BEAUTY AND EXCEPTIONAL DURABILITY, IT REPRESENTS THE PERFECT COMBINATION OF ELEGANCE AND LONGEVITY.

Dimensions:	216 x 216 x 92 cm 85 x 85 x 36 inches
Empty Weight:	320 kg // 706 lbs
Water Capacity:	1.474 liters // 389 gal
Total Weight:	1.794 kg // 3.995 lbs
Cladding:	Design Cabinet
Seats:	3
Loungers:	2
Water Jets:	62
Frame:	Stainless Steel Frame
Insulation:	Xtreme Insulation
Control:	Balboa
Control Panel:	Spatouch
Water Pump:	2 x 3 HP (1-stage)
Circulation Pump:	Silent Wave Eco
Ozonator:	Included
Water Drain:	Included
Filters:	2 x Papers Filters
Heater:	3 KW Balboa
Electrical Requirements:	400V / 3 x 16A

UV Disinfection:	Included
Foot Massage:	Included
Neck Massage:	Included
LED Waterline Lighting:	Included
LED Underwater Lights:	Included
Water Fountains:	Included
Waterfall:	Included
Handrail:	Included

Optional

- Air Blower & Aromatherapy
- Waterwave Sound System
- LED Ambient Light
- Single Control Button
- WiFi Control System
- Waterwave Clear Salt System
- Preparation for External Access (e.g., Air/Heat Pump)

LONDON

DESIGN SERIES MODEL WS500D

DETAILS LONDON



THE LONDON MODEL FROM THE DESIGN SERIES EMBODIES URBAN LUXURY AND MODERN AESTHETICS IN PERFECT HARMONY. THIS EXCLUSIVE MODEL IS DISTINGUISHED BY ITS CLEAN LINES AND ELEGANT, MINIMALIST DESIGN THAT SEAMLESSLY INTEGRATES INTO ANY MODERN OUTDOOR SETTING.

Dimensions:	216 x 216 x 92 cm 85 x 85 x 36 inches	UV Disinfection:	Included
Empty Weight:	320 kg // 706 lbs	Foot Massage:	Included
Water Capacity:	1.474 liters // 389 gal	Neck Massage:	Included
Total Weight:	1.794 kg // 3.995 lbs	LED Waterline Lighting:	Included
Cladding:	Design Cabinet	LED Underwater Lights:	Included
Seats:	6	Water Fountains:	Included
Water Jets:	38	Waterfall:	Included
Frame:	Stainless Steel Frame		
Insulation:	Xtreme Insulation		
Control:	Balboa		
Control Panel:	Balboa		
Water Pump:	2 x 3 HP (2-stage)		
Circulation Pump:	Included		
Air/Water Regulator:	Included		
Ozonator:	Included		
Water Drain:	Included		
Filters:	2 x Papers Filters		
Heater:	3 KW Balboa		
Electrical Requirements:	400V / 3 x 16A		

Optional

- Air Blower & Aromatherapy
- Waterwave Sound System
- LED Ambient Light
- Single Control Button
- WiFi Control System
- Waterwave Clear Salt System
- Preparation for External Access (e.g., Air/Heat Pump)

RICHMOND

DESIGN SERIES MODEL DEI500

DETAILS RICHMOND



Dimensions:	216 x 165 x 82 cm 85 x 65 x 32 inches
Empty Weight:	327 kg // 721 lbs
Water Capacity:	1.100 liters // 291 gal
Total Weight:	1.370 kg // 3.020 lbs
Cladding:	Design Cabinet
Seats:	1
Loungers:	2
Water Jets:	41
Frame:	Stainless Steel Frame
Insulation:	Xtreme Insulation
Control:	Balboa
Control Panel:	Spatouch
Water Pump:	1 x 3 HP (2-stage) + 1 x 3 HP (1-stage)
Circulation Pump:	Silent Wave Eco
Ozonator:	Included
Water Drain:	Included
Filter:	1 x Papers Filter
Heater:	3 KW Balboa
Electrical Requirements:	400V / 3 x 16A

UV Disinfection:	Included
Foot Massage:	Included
Neck Massage:	Included
LED Waterline Lighting:	Included
LED Underwater Lights:	Included
Waterfall:	Included
Handrail:	Included

Optional

- Air Blower & Aromatherapy
- Waterwave Sound System
- LED Ambient Light
- Single Control Button
- WiFi Control System
- Waterwave Clear Salt System
- Preparation for External Access (e.g., Air/Heat Pump)

THE RICHMOND HOT TUB COMBINES INNOVATION WITH A CAPTIVATING PLAY OF COLORS THAT ENCHANTS ANY AMBIANCE. ITS OUTSTANDING FEATURES, SUCH AS THE AMBIENT LIGHT AND THE ELEGANT DESIGN CLADDING, SET NEW STANDARDS IN DESIGN AND FUNCTIONALITY.

COLUMBUS

DESIGN SERIES MODEL WL221D

DETAILS COLUMBUS



THE COLUMBUS MODEL REPRESENTS A HARMONIOUS BLEND OF ADVANCED TECHNOLOGY AND RELAXING LUXURY. WITH ITS REFINED CONSTRUCTION AND INVITING DESIGN, THE COLUMBUS IS A TRUE MASTERPIECE THAT ADDS A TOUCH OF ELEGANCE TO ANY OUTDOOR SPACE.

Dimensions:	216 x 165 x 74 cm 85 x 65 x 29 inches
Empty Weight:	327 kg // 721 lbs
Water Capacity:	1.100 liters // 291 gal
Total Weight:	1.370 kg // 3.020 lbs
Cladding:	Design Cabinet
Seats:	1
Loungers:	2
Water Jets:	33
Frame:	Stainless Steel Frame
Insulation:	Xtreme Insulation
Control:	Balboa
Control Panel:	Spatouch
Water Pump:	2 x 3 HP (1-stage)
Circulation Pump:	Silent Wave Eco
Ozonator:	Included
Water Drain:	Included
Filter:	1 x Papers Filter
Heater:	3 KW Balboa
Electrical Requirements:	400V / 3 x 16A

UV Disinfection:	Included
Foot Massage:	Included
Neck Massage:	Included
LED Waterline Lighting:	Included
LED Underwater Lights:	Included
Waterfall:	Included

- Optional**
- Air Blower & Aromatherapy
 - Waterwave Sound System
 - LED Ambient Light
 - Single Control Button
 - WiFi Control System
 - Waterwave Clear Salt System
 - Preparation for External Access (e.g., Air/Heat Pump)



OVERFLOW SERIES

ELEGANCE IN ABUNDANCE

Overflow pools are considered the pinnacle of luxury, and rightfully so. Once you experience an overflow pool, you are quickly convinced of its advantages. A flawless water surface, illuminated and recessed into the ground, perfectly integrated into your terrace or living space. When combined with the high-end wellness technology from Waterwave Spas, something truly unique emerges. The Waterwave Spas „Overflow“ Series brings the wellness hotel experience to your home!



Winipeg



Athen

WINIPEG

OVERFLOW SERIES MODEL AR711

DETAILS WINIPEG



THE WINNIPEG MODEL REDEFINES HOT TUB LUXURY WITH ITS INNOVATIVE DESIGN. THIS FREESTANDING HOT TUB WITH AN OVERFLOW CHANNEL COMBINES FUNCTIONALITY WITH AESTHETIC DESIGN, OFFERING THE FLEXIBILITY TO BE PLACED OUTDOORS WITHOUT THE NEED FOR RECESSING. A SPECIAL FEATURE OF THE WINNIPEG IS THE INTEGRATION OF TWO OVERFLOW TANKS DIRECTLY INTO THE POOL, PROVIDING AN ELEGANT AND SPACE-SAVING SOLUTION.

Dimensions:	230 x 230 x 97 cm 91 x 91 x 38 inches	UV Disinfection:	Included
Empty Weight:	350 kg // 772 lbs	Foot Massage:	Included
Water Capacity:	1.200 liters // 317 gal	Neck Massage:	Included
Overflow Water Tanks:	2x 240 liters // 2 x 63 gal	LED Waterline Lighting:	Included
Total Weight:	2.030 kg // 4.475 lbs	LED Underwater Lights:	Included
Cladding:	Design Cabinet	Overflow Circulation System:	
Seats:	4	1 x Circulation Pump	
Loungers:	1	2 x Integrated Water Tanks, each 240 liters	
Water Jets:	36	Automatic Water Supply System	
Frame:	Stainless Steel Frame		
Insulation:	Xtreme Insulation		
Control:	Balboa	Optional	
Control Panel:	Spatouch	• Airblower & Aromatherapy	
Water Pump:	2 x 3 HP (1-stage)	• Preparation for External Access (e.g., Air/Heat Pump)	
Circulation Pump:	Included		
Ozonator:	Included		
Water Drain:	Included		
Filter:	2 x Papers Filter		
Heater:	3 KW Balboa		
Electrical Requirements:	400V / 3 x 16A		

ATHEN

OVERFLOW SERIES MODEL WW200

DETAILS ATHEN



THE ATHENS MODEL FROM OUR „OVERFLOW“ SERIES REPRESENTS A SEAMLESS BLEND OF AN OVERFLOW POOL AND A WELLNESS OASIS, EMBODIED BY ITS IMPRESSIVE ELEGANCE AND EXCEPTIONAL COMFORT. AS A HIGHLIGHT IN ANY OUTDOOR SPACE, THE IN-GROUND OVERFLOW EFFECT DRAWS ALL EYES AND IS FURTHER ACCENTUATED BY THE COLORFUL UNDERWATER LEDS.

Dimensions:	Ø 205 x 90 cm Ø 81 x 35 inches
Empty Weight:	289 kg // 637 lbs
Water Capacity:	1.680 liters // 444 gal
Total Weight:	1.969 kg // 4.341 lbs
Cladding:	None
Seats:	6
Water Jets:	30
Frame:	Stainless Steel Frame
Control:	None
Pumps:	None
Whirlpool Cover:	None
Sand Filter System:	None
LED Underwater Lights:	Included
Empty Piping:	Included
Connection Piping as per Drawing	

Optional Technology Package:
1 x 3 HP Water Pump
1 x 250 Watt Circulation Pump
1 x Control System including Balboa Control Panel





GOLD SERIES

THE RIGHT HOT TUB FOR EVERY SPACE

In the Gold Series, you will find an extensive range of products that perfectly meet the wellness needs of everyone, from single households to large families. High-quality hot tubs with excellent features provide pure relaxation, quality time with your loved ones and friends, as well as fun and play for the youngest family members. See for yourself the diversity of the Gold Series.



Portland



Lincoln



Cleveland



Memphis



Buffalo



Chicago



Tampa



Detroit



Imola



Ravenna



Turin



Cantania



Pesaro

DETROIT

GOLD SERIES MODEL G3600

Dimensions:	200 x 200 x 74 cm 79 x 79 x 29 inches
Empty Weight:	235 kg // 518 lbs
Water Capacity:	1.013 liters // 268 gal
Total Weight:	1.248 kg // 2.751 lbs
Cladding:	WPC Cabinet
Seats:	5
Loungers:	1
Water Jets:	28
Frame:	Stainless Steel Frame
Insulation:	Xtreme Insulation
Control:	Balboa
Control Panel:	Balboa
Water Pump:	1 x 3 HP
Circulation Pump:	Included
Air/Water Regulator:	Included
Ozonator:	Included
Water Drain:	Included
Filters:	2 x Papers Filters
Heater:	3 KW Balboa
Electrical Requirements:	400V / 3 x 16A or 230V / 1 x 16A



Airblower & Aromatherapy:	Included
Foot Massage:	Included
Neck Massage:	Included
LED Underwater Lights:	Included
LED Waterline Lighting:	Included
Water Fountains:	Included

Optional

- UV Disinfection
- Waterwave Sound System
- Preparation for External Access (e.g., Air/Heat Pump)

CHICAGO

GOLD SERIES MODEL AR221

Dimensions:	210 x 140 x 74 cm 83 x 55 x 29 inches
Empty Weight:	210 kg // 463 lbs
Water Capacity:	680 liters // 180 gal
Total Weight:	890 kg // 1.962 lbs
Cladding:	WPC Cabinet
Loungers:	2
Water Jets:	30
Frame: Stainless	Steel Frame
Insulation:	Xtreme Insulation
Control:	Balboa
Control Panel:	Balboa
Water Pump:	1 x 3 HP
Circulation Pump:	Included
Air/Water Regulator:	Included
Ozonator:	Included
Water Drain:	Included
Filter:	1 x Papers Filter
Heater:	3 KW Balboa
Electrical Requirements:	400V / 3 x 16A or 230V / 1 x 16A



Airblower & Aromatherapy:	Included
Foot Massage:	Included
Neck Massage:	Included
LED Underwater Lights:	Included
LED Waterline Lighting:	Included
Water Fountains:	Included

Optional

- UV Disinfection
- Waterwave Sound System
- Preparation for External Access (e.g., Air/Heat Pump)

PORTLAND

GOLD SERIES MODEL G3000

Dimensions:	230 x 230 x 92 cm 91 x 91 x 36 inches
Empty Weight:	380 kg // 838 lbs
Water Capacity:	1.584 liters // 418 gal
Total Weight:	1.964 kg // 4.330 lbs
Cladding:	WPC Cabinet
Seats:	3
Loungers:	2
Water Jets:	59
Frame:	Stainless Steel Frame
Insulation:	Xtreme Insulation
Control:	Balboa
Control Panel:	Balboa
Water Pump:	2 x 3 HP
Circulation Pump:	Included
Air/Water Regulator:	Included
Ozonator:	Included
Water Drain:	Included
Filters:	2 x Papers Filters
Heater:	3 kW Balboa
Electrical Requirements:	400V / 3 x 16A



Foot Massage:	Included
Neck Massage:	Included
LED Underwater Lights:	Included
LED Waterline Lighting:	Included
Water Fountains:	Included

Optional

- Airblower & Aromatherapy
- UV Disinfection
- Waterwave Sound System
- Preparation for External Access (e.g., Air/Heat Pump)

LINCOLN

GOLD SERIES MODEL G3100

Dimensions:	230 x 230 x 92 cm 91 x 91 x 36 inches
Empty Weight:	380 kg // 838 lbs
Water Capacity:	1.558 liters // 412 gal
Total Weight:	1.938 kg // 4.273 lbs
Cladding:	WPC Cabinet
Seats:	5
Loungers:	1
Water Jets:	53
Frame:	Stainless Steel Frame
Insulation:	Xtreme Insulation
Control:	Balboa
Control Panel:	Balboa
Water Pump:	2 x 3 HP
Circulation Pump:	Included
Air/Water Regulator:	Included
Ozonator:	Included
Water Drain:	Included
Filters:	2 x Papers Filters
Heater:	3 kW Balboa
Electrical Requirements:	400V / 3 x 16A



Foot Massage:	Included
Neck Massage:	Included
LED Underwater Lights:	Included
LED Waterline Lighting:	Included
Water Fountains:	Included

Optional

- Airblower & Aromatherapy
- UV Disinfection
- Waterwave Sound System
- Preparation for External Access (e.g., Air/Heat Pump)

CLEVELAND



GOLD SERIES MODEL G3200

Dimensions:	216 x 216 x 92 cm 85 x 85 x 36 inches
Empty Weight:	320 kg // 705 lbs
Water Capacity:	1.474 liters // 389 gal
Total Weight:	1.794 kg // 3.955 lbs
Cladding:	WPC Cabinet
Seats:	5
Loungers:	1
Water Jets:	51
Frame:	Stainless Steel Frame
Insulation:	Xtreme Insulation
Control:	Balboa
Control Panel:	Balboa
Water Pump:	2 x 3 HP
Circulation Pump:	Included
Air/Water Regulator:	Included
Ozonator:	Included
Water Drain:	Included
Filters:	2 x Papers Filters
Heater:	3 kW Balboa
Electrical Requirements:	400V / 3 x 16A

Foot Massage:	Included
Neck Massage:	Included
LED Underwater Lights:	Included
LED Waterline Lighting:	Included
Water Fountains:	Included

Optional

- Airblower & Aromatherapy
- UV Disinfection
- Waterwave Sound System
- Preparation for External Access (e.g., Air/Heat Pump)

MEMPHIS



GOLD SERIES MODEL G3300

Dimensions:	200 x 200 x 82 cm 79 x 79 x 32 inches
Empty Weight:	310 kg // 683 lbs
Water Capacity:	1.013 liters // 268 gal
Total Weight:	1.323 kg // 2.917 lbs
Cladding:	WPC Cabinet
Seats:	5
Loungers:	1
Water Jets:	28
Frame:	Stainless Steel Frame
Insulation:	Xtreme Insulation
Control:	Balboa
Control Panel:	Balboa
Water Pump:	1 x 3 HP
Circulation Pump:	Included
Air/Water Regulator:	Included
Ozonator:	Included
Water Drain:	Included
Filters:	2 x Papers Filters
Heater:	3 kW Balboa
Electrical Requirements:	400V / 3 x 16A or 230V / 1 x 16A

Foot Massage:	Included
Neck Massage:	Included
LED Underwater Lights:	Included
LED Waterline Lighting:	Included
Water Fountains:	Included

Optional

- Airblower & Aromatherapy
- UV Disinfection
- Waterwave Sound System
- Preparation for External Access (e.g., Air/Heat Pump)

TAMPA

GOLD SERIES MODEL G3400

Dimensions:	200 x 200 x 82 cm 79 x 79 x 32 inches
Empty Weight:	312 kg // 688 lbs
Water Capacity:	1.050 liters // 277 gal
Total Weight:	1.362 kg // 3.003 lbs
Cladding:	WPC Cabinet
Seats:	3
Loungers:	2
Water Jets:	30
Frame:	Stainless Steel Frame
Insulation:	Xtreme Insulation
Control:	Balboa
Control Panel:	Balboa
Water Pump:	1 x 3 HP
Circulation Pump:	Included
Air/Water Regulator:	Included
Ozonator:	Included
Water Drain:	Included
Filters:	2 x Papers Filters
Heater:	3 kW Balboa
Electrical Requirements:	400V / 3 x 16A or 230V / 1 x 16A



Foot Massage:	Included
Neck Massage:	Included
LED Underwater Lights:	Included
LED Waterline Lighting:	Included
Water Fountains:	Included

Optional

- Airblower & Aromatherapy
- UV Disinfection
- Waterwave Sound System
- Preparation for External Access (e.g., Air/Heat Pump)

BUFFALO

GOLD SERIES MODEL G3500

Dimensions:	216 x 165 x 82 cm 85 x 65 x 32 inches
Empty Weight:	265 kg // 584 lbs
Water Capacity:	900 liters // 238 gal
Total Weight:	1.165 kg // 2.568 lbs
Cladding:	WPC Cabinet
Seats:	1
Loungers:	2
Water Jets:	26
Frame:	Stainless Steel Frame
Insulation:	Xtreme Insulation
Control:	Balboa
Control Panel:	Balboa
Water Pump:	1 x 3 HP
Circulation Pump:	Included
Air/Water Regulator:	Included
Ozonator:	Included
Water Drain:	Included
Filter:	1 x Papers Filter
Heater:	3 kW Balboa
Electrical Requirements:	400V / 3 x 16A or 230V / 1 x 16A



Foot Massage:	Included
Neck Massage:	Included
LED Underwater Lights:	Included
LED Waterline Lighting:	Included
Water Fountains:	Included

Optional

- Airblower & Aromatherapy
- UV Disinfection
- Waterwave Sound System
- Preparation for External Access (e.g., Air/Heat Pump)

RAVENNA



GOLD SERIES MODEL G600

Dimensions:	305 x 220 x 92 cm 120 x 87 x 36 inches
Empty Weight:	550 kg // 1.213 lbs
Water Capacity:	2.930 liters // 774 gal
Total Weight:	3.480 kg // 7.672 lbs
Cladding:	WPC Cabinet
Seats:	4
Loungers:	2
Water Jets:	75
Frame:	Stainless Steel Frame
Insulation:	Xtreme Insulation
Control:	Balboa
Control Panel:	Balboa
Water Pump:	1 x 3 HP (single-stage) + 2 x 2 HP (single-stage)
Circulation Pump:	Included
Air/Water Regulator:	Included
Ozonator:	Included
Water Drain:	Included
Filters:	2 x Papers Filters
Heater:	3 kW Balboa
Electrical Requirements:	400V / 3 x 16A

Foot Massage:	Included
Neck Massage:	Included
LED Underwater Lights:	Included
LED Waterline Lighting:	Included
Water Fountains:	Included

Optional

- Airblower & Aromatherapy
- UV Disinfection
- Waterwave Sound System
- Waterwave Clear Saltsystem
- Preparation for External Access (e.g., Air/Heat Pump)

TURIN



GOLD SERIES MODEL EC3500

Dimensions:	150 x 210 x 80 cm 59 x 83 x 31 inches
Empty Weight:	260 kg // 573 lbs
Water Capacity:	950 liters // 251 gal
Total Weight:	1.210 kg // 320 lbs
Cladding:	WPC Cabinet
Seats:	2
Loungers:	1
Water Jets:	35
Frame:	Stainless Steel Frame
Insulation:	Xtreme Insulation
Control:	Balboa
Control Panel:	Balboa
Water Pump:	1 x 3 HP
Circulation Pump:	Included
Air/Water Regulator:	Included
Ozonator:	Included
Water Drain:	Included
Filter:	1 x Papers Filter
Heater:	3 kW Balboa
Electrical Requirements:	400V / 3 x 16A or 230V / 1 x 16A

Foot Massage:	Included
Neck Massage:	Included
LED Underwater Lights:	Included
LED Waterline Lighting:	Included
Waterfall:	Included

Optional

- Airblower & Aromatherapy
- UV Disinfection
- Waterwave Sound System
- Preparation for External Access (e.g., Air/Heat Pump)

IMOLA

GOLD SERIES MODEL G4000

Dimensions:	198 x 198 x 90 cm 78 x 78 x 35 inches
Empty Weight:	295 kg // 650 lbs
Water Capacity:	1.270 liters // 336 gal
Total Weight:	1.595 kg // 3.516 lbs
Cladding:	WPC Cabinet
Seats:	4
Loungers:	1
Water Jets:	44
Frame:	Stainless Steel Frame
Insulation:	Xtreme Insulation
Control:	Balboa
Control Panel:	Balboa
Water Pump:	2 x 3 HP
Circulation Pump:	Included
Air/Water Regulator:	Included
Ozonator:	Included
Water Drain:	Included
Filter:	1 x Papers Filter
Heater:	3 kW Balboa
Electrical Requirements:	400V / 3 x 16A



Foot Massage:	Included
Neck Massage:	Included
LED Underwater Lights:	Included
LED Waterline Lighting:	Included
Waterfall:	Included

Optional

- Airblower & Aromatherapy
- UV Disinfection
- Waterwave Sound System
- Waterwave Clear Saltsystem
- Preparation for External Access (e.g., Air/Heat Pump)

CANTANIA

GOLD SERIES MODEL G1100

Dimensions:	225 x 100 x 78 cm 89 x 39 x 31 inches
Empty Weight:	175 kg // 386 lbs
Water Capacity:	789 liters // 208 gal
Total Weight:	964 kg // 2.125 lbs
Cladding:	WPC Cabinet
Seats:	2
Water Jets:	33
Frame:	Stainless Steel Frame
Insulation:	Xtreme Insulation
Control:	Balboa
Control Panel:	Balboa
Water Pump:	1 x 3 HP (2-stage)
Circulation Pump:	Included
Air/Water Regulator:	Included
Ozonator:	Included
Water Drain:	Included
Filter:	1 x Papers Filter
Heater:	3 kW Balboa
Electrical Requirements:	400V / 3 x 16A



LED Underwater Lights:	Included
LED Waterline Lighting:	Included

Optional

- Airblower & Aromatherapy
- UV Disinfection
- Waterwave Sound System
- Preparation for External Access (e.g., Air/Heat Pump)

PESARO

GOLD SERIES MODEL G400

Dimensions:	200 x 90 cm 79 x 35 inches
Empty Weight:	250 kg // 551 lbs
Water Capacity:	825 liters // 218 gal
Total Weight:	1.075 kg // 2.370 lbs
Cladding:	WPC Cabinet
Seats:	6
Water Jets:	31
Frame:	Stainless Steel Frame
Insulation:	Xtreme Insulation
Control:	Balboa
Control Panel:	Balboa
Water Pump:	1 x 3 HP
Circulation Pump:	Included
Air/Water Regulator:	Included
Ozonator:	Included
Water Drain:	Included
Filter:	1 x Papers Filter
Heater:	3 kW Balboa
Electrical Requirements:	400V / 3 x 16A or 230V / 1 x 16A



LED Underwater Lights:	Included
LED Waterline Lighting:	Included

- Optional**
- Airblower & Aromatherapy
 - UV Disinfection
 - Waterwave Sound System
 - Waterwave Clear Saltsystem
 - Preparation for External Access (e.g., Air/Heat Pump)





CHROM SERIES

ELEGANT COMFORT IN EVERY CORNER

The Chrom Series by Waterwave Spas® sets new standards in design and versatility. With its distinctive square design, it offers a perfect solution for modern living concepts. Each model in the Chrom Series combines advanced technology with top-notch features to provide you and your loved ones with unparalleled moments of relaxation and enjoyment.



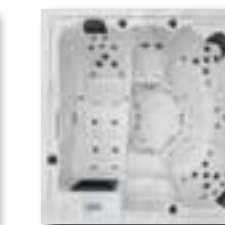
Madison



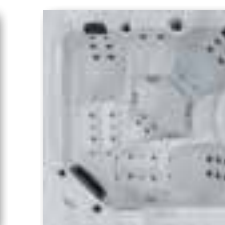
Houston



Phoenix



Austin



Nashville



Victoria



Atlanta



Seattle



Omaha

NASHVILLE



CHROM SERIES MODEL WL522C

Dimensions:	216 x 216 x 74 cm 85 x 85 x 29 inches
Empty Weight:	300 kg // 661 lbs
Water Capacity:	1.250 liters // 330 gal
Total Weight:	1.550 kg // 3.417 lbs
Cladding:	WPC Cabinet
Seats:	2
Loungers:	2
Water Jets:	38
Frame:	Stainless Steel Frame
Insulation:	Xtreme Insulation
Control:	Balboa
Control Panel:	Balboa
Water Pump:	2 x 3 HP
Circulation Pump:	Included
Air/Water Regulator:	Included
Ozonator:	Included
Water Drain:	Included
Filters:	2 x Papers Filters
Heater:	3 kW Balboa
Electrical Requirements:	400V / 3 x 16A

Foot Massage:	Included
Neck Massage:	Included
LED Underwater Lights:	Included
LED Waterline Lighting:	Included
Waterfall:	Included

- Optional**
- Airblower & Aromatherapy
 - UV Disinfection
 - Waterwave Sound System
 - Preparation for External Access (e.g., Air/Heat Pump)

OMAHA



CHROM SERIES MODEL WL221C

Dimensions:	216 x 165 x 74 cm 85 x 65 x 29 inches
Empty Weight:	265 kg // 584 lbs
Water Capacity:	900 liters // 238 gal
Total Weight:	1.165 kg // 2.568 lbs
Cladding:	WPC Cabinet
Seats:	1
Loungers:	2
Water Jets:	33
Frame:	Stainless Steel Frame
Insulation:	Xtreme Insulation
Control:	Balboa
Control Panel:	Balboa
Water Pump:	2 x 3 HP
Circulation Pump:	Included
Air/Water Regulator:	Included
Ozonator:	Included
Water Drain:	Included
Filter:	1 x Papers Filter
Heater:	3 kW Balboa
Electrical Requirements:	400V / 3 x 16A

Foot Massage:	Included
Neck Massage:	Included
LED Underwater Lights:	Included
LED Waterline Lighting:	Included
Waterfall:	Included

- Optional**
- Airblower & Aromatherapy
 - UV Disinfection
 - Waterwave Sound System
 - Preparation for External Access (e.g., Air/Heat Pump)

MADISON

CHROM SERIES MODEL WL720

Dimensions:	230 x 230 x 92 cm 91 x 91 x 36 inches
Empty Weight:	380 kg // 838 lbs
Water Capacity:	1.584 liters // 418 gal
Total Weight:	1.964 kg // 4.330 lbs
Cladding:	WPC Cabinet
Seats:	2
Loungers:	2
Water Jets:	54
Frame:	Stainless Steel Frame
Insulation:	Xtreme Insulation
Control:	Balboa
Control Panel:	Balboa
Water Pump:	2 x 3 HP
Circulation Pump:	Included
Air/Water Regulator:	Included
Ozonator:	Included
Water Drain:	Included
Filters:	2 x Papers Filters
Heater:	3 kW Balboa
Electrical Requirements:	400V / 3 x 16A



Foot Massage:	Included
Neck Massage:	Included
LED Underwater Lights:	Included
LED Waterline Lighting:	Included
Waterfall:	Included

- Optional**
- Airblower & Aromatherapy
 - UV Disinfection
 - Waterwave Sound System
 - Preparation for External Access (e.g., Air/Heat Pump)

HOUSTON

CHROM SERIES MODEL WL521C

Dimensions:	216 x 216 x 92 cm 85 x 85 x 36 inches
Empty Weight:	320 kg // 838 lbs
Water Capacity:	1.474 liters // 389 gal
Total Weight:	1.794 kg // 3.955 lbs
Cladding:	WPC Cabinet
Seats:	3
Loungers:	2
Water Jets:	62
Frame:	Stainless Steel Frame
Insulation:	Xtreme Insulation
Control:	Balboa
Control Panel:	Balboa
Water Pump:	2 x 3 HP
Circulation Pump:	Included
Air/Water Regulator:	Included
Ozonator:	Included
Water Drain:	Included
Filters:	2 x Papers Filters
Heater:	3 kW Balboa
Electrical Requirements:	400V / 3 x 16A



Foot Massage:	Included
Neck Massage:	Included
LED Underwater Lights:	Included
LED Waterline Lighting:	Included
Waterfall:	Included

- Optional**
- Airblower & Aromatherapy
 - UV Disinfection
 - Waterwave Sound System
 - Preparation for External Access (e.g., Air/Heat Pump)

PHOENIX

CHROM SERIES MODEL WL520

Dimensions:	216 x 216 x 92 cm 85 x 85 x 36 inches
Empty Weight:	320 kg // 705 lbs
Water Capacity:	1.474 liters // 389 gal
Total Weight:	1.794 kg // 3.955 lbs
Cladding:	WPC Cabinet
Seats:	2
Loungers:	2
Water Jets:	54
Frame:	Stainless Steel Frame
Insulation:	Xtreme Insulation
Control:	Balboa
Control Panel:	Balboa
Water Pump:	2 x 3 HP
Circulation Pump:	Included
Air/Water Regulator:	Included
Ozonator:	Included
Water Drain:	Included
Filters:	2 x Papers Filters
Heater:	3 kW Balboa
Electrical Requirements:	400V / 3 x 16A



Foot Massage:	Included
Neck Massage:	Included
LED Underwater Lights:	Included
LED Waterline Lighting:	Included
Waterfall:	Included

Optional

- Airblower & Aromatherapy
- UV Disinfection
- Waterwave Sound System
- Preparation for External Access (e.g., Air/Heat Pump)

AUSTIN

CHROM SERIES MODEL WL510

Dimensions:	216 x 216 x 92 cm 85 x 85 x 36 inches
Empty Weight:	320 kg // 705 lbs
Water Capacity:	1.474 liters // 389 gal
Total Weight:	1.794 kg // 3.955 lbs
Cladding:	WPC Cabinet
Seats:	4
Loungers:	1
Water Jets:	50
Frame:	Stainless Steel Frame
Insulation:	Xtreme Insulation
Control:	Balboa
Control Panel:	Balboa
Water Pump:	2 x 3 HP
Circulation Pump:	Included
Air/Water Regulator:	Included
Ozonator:	Included
Water Drain:	Included
Filters:	2 x Papers Filters
Heater:	3 kW Balboa
Electrical Requirements:	400V / 3 x 16A



Foot Massage:	Included
Neck Massage:	Included
LED Underwater Lights:	Included
LED Waterline Lighting:	Included
Waterfall:	Included

Optional

- Airblower & Aromatherapy
- UV Disinfection
- Waterwave Sound System
- Preparation for External Access (e.g., Air/Heat Pump)

ATLANTA

CHROM SERIES MODEL WL320

Dimensions:	200 x 200 x 82 cm 79 x 79 x 32 inches
Empty Weight:	312 kg // 688 lbs
Water Capacity:	1.050 liters // 277 gal
Total Weight:	1.362 kg // 3.003 lbs
Cladding:	WPC Cabinet
Seats:	2
Loungers:	2
Water Jets:	29
Frame:	Stainless Steel Frame
Insulation:	Xtreme Insulation
Control:	Balboa
Control Panel:	Balboa
Water Pump:	1 x 3 HP
Circulation Pump:	Included
Air/Water Regulator:	Included
Ozonator:	Included
Water Drain:	Included
Filters:	2 x Papers Filters
Heater:	3 kW Balboa
Electrical Requirements:	400V / 3 x 16A or 230V / 1 x 16A



Foot Massage:	Included
Neck Massage:	Included
LED Underwater Lights:	Included
LED Waterline Lighting:	Included
Waterfall:	Included

Optional

- Airblower & Aromatherapy
- UV Disinfection
- Waterwave Sound System
- Preparation for External Access (e.g., Air/Heat Pump)

VICTORIA

CHROM SERIES MODEL WS500

Dimensions:	216 x 216 x 92 cm 85 x 85 x 36 inches
Empty Weight:	320 kg // 705 lbs
Water Capacity:	1.474 liters // 389 gal
Total Weight:	1.794 kg // 3.955 lbs
Cladding:	WPC Cladding
Seats:	6
Water Jets:	38
Frame:	Stainless Steel Frame
Insulation:	Xtreme Insulation
Control:	Balboa
Control Panel:	Balboa
Water Pump:	2 x 3 HP (2-stage)
Circulation Pump:	Included
Air/Water Regulator:	Included
Ozonator:	Included
Water Drain:	Included
Filters:	2 x Pleated Filters
Heater:	3 kW Balboa
Electrical Requirements:	400V / 3 x 16A



Neck Massage:	Included
LED Underwater Lights:	Included
LED Waterline Lighting:	Included
Water Fountains:	Included
Waterfall:	Included

Optional

- Airblower & Aromatherapy
- UV Disinfection
- Waterwave Sound System
- Preparation for External Access (e.g., Air/Heat Pump)

SEATTLE

CHROM SERIES MODEL WL220

Dimensions:	216 x 165 x 82 cm 85 x 65 x 32 inches
Empty Weight:	265 kg // 584 lbs
Water Capacity:	900 liters // 238 gal
Total Weight:	1.165 kg // 2.568 lbs
Cladding:	WPC Cabinet
Seats:	1
Loungers:	2
Water Jets:	29
Frame:	Stainless Steel Frame
Insulation:	Xtreme Insulation
Control:	Balboa
Control Panel:	Balboa
Water Pump:	1 x 3 HP
Circulation Pump:	Included
Air/Water Regulator:	Included
Ozonator:	Included
Water Drain:	Included
Filters:	1 x Papers Filter
Heater:	3 kW Balboa
Electrical Requirements:	400V / 3 x 16A or 230V / 1 x 16A



Foot Massage:	Included
Neck Massage:	Included
LED Underwater Lights:	Included
LED Waterline Lighting:	Included
Waterfall:	Included

Optional

- Airblower & Aromatherapy
- UV Disinfection
- Waterwave Sound System
- Preparation for External Access (e.g., Air/Heat Pump)





BASIC SERIES

TAILORED WELLNESS ENJOYMENT FOR EVERY BUDGET

Discover our Basic Series – the ideal solution for budget-conscious connoisseurs. Whether for a single household or a small family, this series offers high-quality hot tubs perfectly tailored to your needs and space.



Portland Basic



Lincoln Basic



Cleveland Basic



Memphis Basic



Tampa Basic



Detroit Basic



Jersey Basic



Arvada Basic



Boise Basic



Buffalo Basic



Chicago Basic

Basic DETROIT

BASIC SERIES

Dimensions:	200 x 200 x 74 cm 79 x 79 x 29 inches
Empty Weight:	235 kg // 518 lbs
Water Capacity:	1.013 liters // 268 gal
Total Weight:	1.248 kg // 2.751 lbs
Cladding:	WPC Cabinet
Color:	Silver Marble / Dark Grey
Seats:	5
Loungers:	1
Water Jets:	28
Frame:	Stainless Steel Frame
Insulation:	Thermolayer
Control:	Balboa
Control Panel:	Balboa
Water Pump:	1 x 3 HP
Circulation Pump:	Included
Air/Water Regulator:	Included
Ozonator:	Included
Water Drain:	Included
Filters:	2 x Papers Filters
Heater:	3 kW Balboa
Electrical Requirements:	400V / 3 x 16A or 230V / 1 x 16A



Foot Massage:	Included
Neck Massage:	Included
LED Underwater Lights:	Included
LED Waterline Lighting:	Included
Water Fountains:	Included

Basic CHICAGO

BASIC SERIES

Dimensions:	210 x 140 x 74 cm 83 x 55 x 29 inches
Empty Weight:	210 kg // 463 lbs
Water Capacity:	680 liters // 180 gal
Total Weight:	890 kg // 1.962 lbs
Cladding:	WPC Cabinet
Color:	Silver Marble / Dark Grey
Loungers:	2
Water Jets:	30
Frame:	Stainless Steel Frame
Insulation:	Thermolayer
Control:	Balboa
Control Panel:	Balboa
Water Pump:	1 x 3 HP
Circulation Pump:	Included
Air/Water Regulator:	Included
Ozonator:	Included
Water Drain:	Included
Filter:	1 x Papers Filter
Heater:	3 kW Balboa
Electrical Requirements:	400V / 3 x 16A or 230V / 1 x 16A



Foot Massage:	Included
Neck Massage:	Included
LED Underwater Lights:	Included
LED Waterline Lighting:	Included
Water Fountains:	Included

Basic PORTLAND

BASIC SERIES

Dimensions:	230 x 230 x 92 cm 91 x 91 x 36 inches
Empty Weight:	380 kg // 838 lbs
Water Capacity:	1.584 liters // 418 gal
Total Weight:	1.964 kg // 4.330 lbs
Cladding:	WPC Cabinet
Color:	Silver Marble / Dark Grey
Seats:	3
Loungers:	2
Water Jets:	59
Frame:	Stainless Steel Frame
Insulation:	Thermolayer
Control:	Balboa
Control Panel:	Balboa
Water Pump:	2 x 3 HP
Circulation Pump:	Included
Air/Water Regulator:	Included
Ozonator:	Included
Water Drain:	Included
Filter:	2 x Papers Filters
Heater:	3 kW Balboa
Electrical Requirements:	400V / 3 x 16A



Foot Massage:	Included
Neck Massage:	Included
LED Underwater Lights:	Included
LED Waterline Lighting:	Included
Water Fountains:	Included

Basic LINCOLN

BASIC SERIES

Dimensions:	230 x 230 x 92 cm 91 x 91 x 36 inches
Empty Weight:	380 kg // 838 lbs
Water Capacity:	1.558 liters // 412 gal
Total Weight:	1.938 kg // 4.273 lbs
Cladding:	WPC Cabinet
Color:	Silver Marble / Dark Grey
Seats:	5
Loungers:	1
Water Jets:	53
Frame:	Stainless Steel Frame
Insulation:	Thermolayer
Control:	Balboa
Control Panel:	Balboa
Water Pump:	2 x 3 HP
Circulation Pump:	Included
Air/Water Regulator:	Included
Ozonator:	Included
Water Drain:	Included
Filter:	2 x Papers Filters
Heater:	3 kW Balboa
Electrical Requirements:	400V / 3 x 16A



Foot Massage:	Included
Neck Massage:	Included
LED Underwater Lights:	Included
LED Waterline Lighting:	Included
Water Fountains:	Included

Basic CLEVELAND

BASIC SERIES

Dimensions:	216 x 216 x 92 cm 85 x 85 x 36 inches
Empty Weight:	320 kg // 705 lbs
Water Capacity:	1.474 liters // 389 gal
Total Weight:	1.794 kg // 3.955 lbs
Cladding:	WPC Cabinet
Color:	Silver Marble / Dark Grey
Seats:	5
Loungers:	1
Water Jets:	51
Frame:	Stainless Steel Frame
Insulation:	Thermolayer
Control:	Balboa
Control Panel:	Balboa
Water Pump:	2 x 3 HP
Circulation Pump:	Included
Air/Water Regulator:	Included
Ozonator:	Included
Water Drain:	Included
Filter:	2 x Papers Filters
Heater:	3 kW Balboa
Electrical Requirements:	400V / 3 x 16A



Foot Massage:	Included
Neck Massage:	Included
LED Underwater Lights:	Included
LED Waterline Lighting:	Included
Water Fountains:	Included

Basic MEMPHIS

BASIC SERIES

Dimensions:	200 x 200 x 82 cm 79 x 79 x 32 inches
Empty Weight:	310 kg // 683 lbs
Water Capacity:	1.013 liters // 268 gal
Total Weight:	1.323 kg // 2.917 lbs
Cladding:	WPC Cabinet
Color:	Silver Marble / Dark Grey
Seats:	5
Loungers:	1
Water Jets:	28
Frame:	Stainless Steel Frame
Insulation:	Thermolayer
Control:	Balboa
Control Panel:	Balboa
Water Pump:	1 x 3 HP
Circulation Pump:	Included
Air/Water Regulator:	Included
Ozonator:	Included
Water Drain:	Included
Filter:	2 x Papers Filters
Heater:	3 kW Balboa
Electrical Requirements:	400V / 3 x 16A or 230V / 1 x 16A



Foot Massage:	Included
Neck Massage:	Included
LED Underwater Lights:	Included
LED Waterline Lighting:	Included
Water Fountains:	Included

Basic TAMPA

BASIC SERIES

Dimensions:	200 x 200 x 82 cm 79 x 79 x 32 inches
Empty Weight:	312 kg // 688 lbs
Water Capacity:	1.050 liters // 277 gal
Total Weight:	1.362 kg // 3.003 lbs
Cladding:	WPC Cabinet
Color:	Silver Marble / Dark Grey
Seats:	3
Loungers:	2
Water Jets:	30
Frame:	Stainless Steel Frame
Insulation:	Thermolayer
Control:	Balboa
Control Panel:	Balboa
Water Pump:	1 x 3 HP
Circulation Pump:	Included
Air/Water Regulator:	Included
Ozonator:	Included
Water Drain:	Included
Filter:	2 x Papers Filters
Heater:	3 kW Balboa
Electrical Requirements:	400V / 3 x 16A or 230V / 1 x 16A



Foot Massage:	Included
Neck Massage:	Included
LED Underwater Lights:	Included
LED Waterline Lighting:	Included
Water Fountains:	Included

Basic BUFFALO

BASIC SERIES

Dimensions:	216 x 165 x 82 cm 85 x 65 x 32 inches
Empty Weight:	265 kg // 584 lbs
Water Capacity:	900 liters // 238 gal
Total Weight:	1.165 kg // 2.568 lbs
Cladding:	WPC Cabinet
Color:	Silver Marble / Dark Grey
Seats:	1
Loungers:	2
Water Jets:	26
Frame:	Stainless Steel Frame
Insulation:	Thermolayer
Control:	Balboa
Control Panel:	Balboa
Water Pump:	1 x 3 HP
Circulation Pump:	Included
Air/Water Regulator:	Included
Ozonator:	Included
Water Drain:	Included
Filter:	1 x Papers Filter
Heater:	3 kW Balboa
Electrical Requirements:	400V / 3 x 16A or 230V / 1 x 16A



Foot Massage:	Included
Neck Massage:	Included
LED Underwater Lights:	Included
LED Waterline Lighting:	Included
Water Fountains:	Included

Basic JERSEY

BASIC SERIES

Dimensions:	195 x 195 x 74 cm 78 x 78 x 29 inches
Empty Weight:	230 kg // 507 lbs
Water Capacity:	1.013 liters // 268 gal
Total Weight:	1.243 kg // 2.740 lbs
Cladding:	WPC Cabinet
Color:	Silver Marble / Dark Grey
Seats:	7
Water Jets:	18
Frame:	Stainless Steel Frame
Insulation:	Thermolayer
Control:	Balboa
Control Panel:	Balboa
Water Pump:	1 x 3 HP
Circulation Pump:	Included
Air/Water Regulator:	Included
Ozonator:	Included
Water Drain:	Included
Filter:	1 x Papers Filter
Heater:	3 kW Balboa
Electrical Requirements:	400V / 3 x 16A or 230V / 1 x 16A



Neck Massage:	Included
LED Underwater Lights:	Included
LED Waterline Lighting:	Included

Basic ARVADA

BASIC SERIES

Dimensions:	195 x 195 x 74 cm 78 x 78 x 29 inches
Empty Weight:	230 kg // 507 lbs
Water Capacity:	1.013 liters // 268 gal
Total Weight:	1.243 kg // 2.740 lbs
Cladding:	WPC Cabinet
Color:	Silver Marble / Dark Grey
Seats:	5
Loungers:	1
Water Jets:	18
Frame:	Stainless Steel Frame
Insulation:	Thermolayer
Control:	Balboa
Control Panel:	Balboa
Water Pump:	1 x 3 HP
Circulation Pump:	Included
Air/Water Regulator:	Included
Ozonator:	Included
Water Drain:	Included
Filter:	1 x Papers Filter
Heater:	3 kW Balboa
Electrical Requirements:	400V / 3 x 16A or 230V / 1 x 16A



Foot Massage:	Included
Neck Massage:	Included
LED Underwater Lights:	Included
LED Waterline Lighting:	Included

Basic BOISE

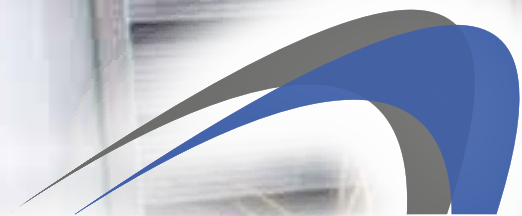
BASIC SERIES

Dimensions:	195 x 195 x 74 cm 78 x 78 x 29 inches
Empty Weight:	230 kg // 507 lbs
Water Capacity:	1.013 liters // 268 gal
Total Weight:	1.243 kg // 2.740 lbs
Cladding:	WPC Cabinet
Color:	Silver Marble / Dark Grey
Seats:	3
Loungers:	2
Water Jets:	17
Frame:	Stainless Steel Frame
Insulation:	Thermolayer
Control:	Balboa
Control Panel:	Balboa
Water Pump:	1 x 3 HP
Circulation Pump:	Included
Air/Water Regulator:	Included
Ozonator:	Included
Water Drain:	Included
Filter:	1 x Papers Filter
Heater:	3 kW Balboa
Electrical Requirements:	400V / 3 x 16A or 230V / 1 x 16A



Neck Massage:	Included
LED Underwater Lights:	Included
LED Waterline Lighting:	Included





WATERWAVE SPAS®





SWIMSPAS I-ZONE

EXCLUSIVE AND PERFECTLY BEAUTIFUL

Our classic SwimSpas with a single zone are a dream for avid swimmers and those aspiring to be. Numerous models in various sizes and designs fit seamlessly into any environment. An adjustable counter-current system allows you to customize the flow strength to suit your swimming or training conditions. Models with massage seats help relax muscles after training and invite you to unwind.



Ätna 75 | 59 | 55 | 45



Dallas 75 | 59 | 55 | 45



Orlando 59 II



Colima



Altai

COLIMA

I-ZONE SWIMSPA

DETAILS COLIMA



COMBINE SPORT AND RELAXATION IN YOUR OWN GARDEN. EQUIPPED WITH A POWERFUL COUNTER-CURRENT SYSTEM AND FOUR MASSAGE SEATS IN ONE POOL, THE COLIMA MODEL IS THE PERFECT MIDDLE GROUND BETWEEN A SWIMMING CHANNEL AND AN OUTDOOR HOT TUB.

Dimensions:	420 x 235 x 135 cm 165 x 93 x 53 inches
Empty Weight:	1.300 kg // 2.866 lbs
Water Capacity:	8.600 liters // 2.272 gal
Total Weight:	9.900 kg // 21.826 lbs
Cladding:	WPC Cabinet
Seats:	4
Water Jets:	24
Frame:	Galvanized Steel Frame
Insulation:	Xtreme Insulation
Control:	Balboa
Control Panel:	Spatouch
Water Pump:	4 x 3 HP
Circulation Pump:	Included
Ozonator:	Included
Water Drain:	Included
Filter:	2 x Papers Filters
Heater:	3 kW Balboa
Electrical Requirements:	400V / 3 x 20A

Counter Current System:	Riverstream Jets
UV Disinfection:	Included
LED Waterline Lighting:	Included
LED Underwater Lights:	Included
Shut-off Valves:	Included
Air/Water Regulator:	Included

Optional

- Air Heat Pump
- Fishing Pole
- Preparation for external access (e.g. Air Heat Pump)

ALSO AVAILABLE AS *Basic* VERSION

ALTAI

I-ZONE SWIMSPA

DETAILS ALTAI



THE SWIMSPA ALTAI IMPRESSES WITH ITS EXCELLENT PRICE-PERFORMANCE RATIO AND IS PERFECT FOR GARDENS WITH LIMITED SPACE. WITH TWO MASSAGE SEATS, A LOUNGER, AND AN INTEGRATED COUNTER-CURRENT SYSTEM, THE ALTAI MODEL COMBINES THE BEST OF BOTH WORLDS.

Dimensions:	400 x 228 x 135 cm 158 x 90 x 53 inches
Empty Weight:	950 kg // 2.094 lbs
Water Capacity:	7.497 liters // 1.981 gal
Total Weight:	8.447 kg // 18.622 lbs
Cladding:	WPC Cabinet
Seats:	2
Loungers:	1
Water Jets:	38
Frame:	Galvanized Steel Frame
Insulation:	Xtreme Insulation
Control:	Balboa
Control Panel:	Spatouch
Water Pump:	2 x 3 HP + 2 x 2 HP
Circulation Pump:	Included
Ozonator:	Included
Water Drain:	Included
Filters:	2 x Papers Filters
Heater:	3 kW Balboa
Electrical Requirements:	400V / 3 x 20A

Counter Current System:	Riverstream Jets
UV Disinfection:	Included
LED Waterline Lighting:	Included
LED Underwater Lights:	Included
Shut-off Valves:	Included
Air/Water Regulator:	Included

Optional

- Air Heat Pump
- Fishing Pole
- Preparation for external access (e.g. Air Heat Pump)

ALSO AVAILABLE AS *Basic* VERSION

ORLANDO 59 II

I-ZONE SWIMSPA

DETAILS ORLANDO 59 II



Dimensions:	590 x 225 x 154 cm 232 x 89 x 61 inches
Empty Weight:	1.800 kg // 3.968 lbs
Water Capacity:	11.500 liters // 3.038 gal
Total Weight:	13.300 kg // 29.322 lbs
Cladding:	WPC Cabinet
Seats:	2
Water Jets:	26
Frame:	Galvanized Steel Frame
Insulation:	Xtreme Insulation
Control:	Balboa
Control Panel:	Spatouch
Water Pump:	2 x 3 HP + 2 x 2 HP
Circulation Pump:	Included
Ozonator:	Included
Water Drain:	Included
Filters:	2 x Papers Filters
Heater:	3 kW Balboa
Electrical Requirements:	400V / 3 x 20A

Counter Current System:	Riverstream Jets
UV Disinfection:	Included
LED Waterline Lighting:	Included
LED Underwater Lights:	Included
Shut-off Valves:	Included
Air/Water Regulator:	Included

Optional

- Tripower Counter Current System (2,400 l/min)
- Tornado Counter Current System (8-step frequency controlled)
- Fishing Pole
- Air Heat Pump
- Preparation for external access (e.g. Air Heat Pump)

ALSO AVAILABLE AS *Basic* VERSION

THE ORLANDO 59 II ENHANCES ANY HOME WITH ITS VERSATILE USABILITY. PERFECTLY DESIGNED TO FIT INTO ALMOST ANY GARDEN, THE ORLANDO OFFERS THE WHOLE FAMILY RELAXING HOURS OF SWIMMING OR UNWINDING. THIS SWIMSPA COMBINES THE BEST OF BOTH WORLDS: THE REFRESHMENT OF A SWIMMING POOL AND THE RELAXATION OF A HOT TUB.

ORLANDO 45

I-ZONE SWIMSPA

DETAILS ORLANDO 45



THE SMALL MULTITALENT AMONG SWIMSPAS, WITH A SINGLE ZONE. THE ORLANDO 45 NOT ONLY FITS INTO MANY GARDENS WITH ITS DIMENSIONS, BUT IT'S ALSO A REAL HIT IN ANY POOL HOUSE. THE COMBINATION OF A SWIMMING CHANNEL WITH A COUNTER-CURRENT SYSTEM AND A HOT TUB IS SIMPLY IRRESISTIBLE!

Dimensions:	450 x 225 x 154 cm 177 x 89 x 61 inches
Empty Weight:	1.380 kg // 3.042 lbs
Water Capacity:	8.800 liters // 2.325 gal
Total Weight:	10.180 kg // 22.443 lbs
Cladding:	WPC Cabinet
Seats:	2
Water Jets:	26
Frame:	Galvanized Steel Frame
Insulation:	Xtreme Insulation
Control:	Balboa
Control Panel:	Spatouch
Water Pump:	2 x 3 HP + 2 x 2 HP
Circulation Pump:	Included
Ozonator:	Included
Water Drain:	Included
Filters:	2 x Papers Filters
Heater:	3 kW Balboa
Electrical Requirements:	400V / 3 x 20A

Counter Current System:	Riverstream Jets
UV Disinfection:	Included
LED Waterline Lighting:	Included
LED Underwater Lights:	Included
Shut-off Valves:	Included
Air/Water Regulator:	Included

Optional

- Tripower Counter Current System (2,400 l/min)
- Fishing Pole
- Air Heat Pump
- Preparation for external access (e.g. Air Heat Pump)

DALLAS 75

I-ZONE SWIMSPA

DETAILS DALLAS 75



Dimensions:	750 x 225 x 154 cm 295 x 89 x 61 inches
Empty Weight:	2.280 kg // 5.027 lbs
Water Capacity:	13.500 liters 3.566 gal
Total Weight:	15.780 kg // 34.789 lbs
Cladding:	WPC Cabinet
Seats:	1
Loungers:	1
Water Jets:	19
Frame:	Galvanized Steel Frame
Insulation:	Xtreme Insulation
Control:	Balboa
Control Panel:	Spatouch
Water Pump:	2 x 3 HP + 2 x 2 HP
Circulation Pump:	Included
Ozonator:	Included
Water Drain:	Included
Filters:	2 x Papers Filters
Heater:	3 kW Balboa
Electrical Requirements:	400V / 3 x 20A

Counter Current System:	Riverstream Jets
UV Disinfection:	Included
LED Waterline Lighting:	Included
LED Underwater Lights:	Included
Shut-off Valves:	Included
Air/Water Regulator:	Included

Optional

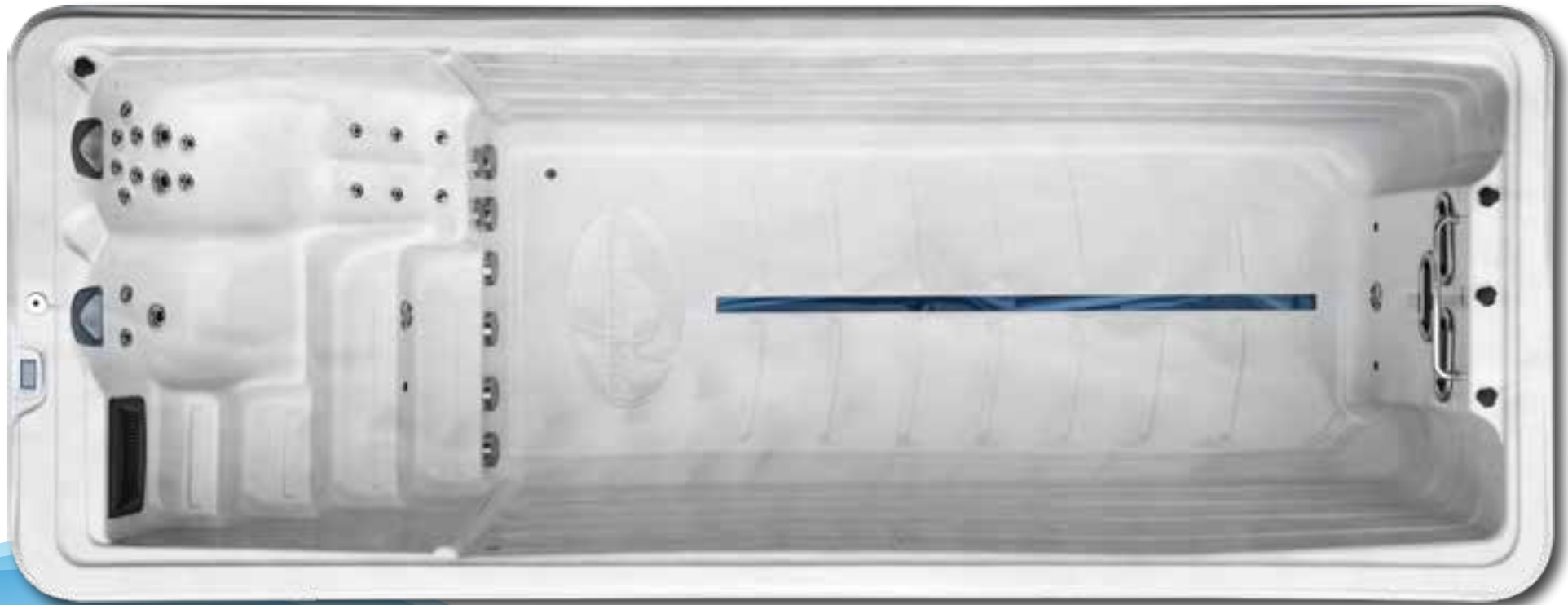
- Tripower Counter Current System (2,400 l/min)
- Tornado Counter Current System (8-step frequency controlled)
- Fishing Pole
- Air Heat Pump
- Preparation for external access (e.g. Air Heat Pump)

AS THE LARGEST MODEL IN THE SERIES, THE DALLAS 75 OFFERS AMPLE SPACE FOR EXTENSIVE SWIMMING ENJOYMENT AND RELAXATION. ITS SPACIOUS DESIGN ALLOWS YOU TO ENJOY THE BENEFITS OF A FULL-SIZED SWIMMING POOL AND A LUXURIOUS HOT TUB IN ONE, IDEAL FOR THOSE WHO DO NOT WANT TO COMPROMISE ON COMFORT AND SPACE.

DALLAS 59

I-ZONE SWIMSPA

DETAILS DALLAS 59



Dimensions:	590 x 225 x 154 cm 232 x 89 x 61 inches
Empty Weight:	1.800 kg // 3.968 lbs
Water Capacity:	11.500 liters // 3.038 gal
Total Weight:	13.300 kg // 29.322 lbs
Cladding:	WPC Cabinet
Seats:	1
Loungers:	1
Water Jets:	19
Frame:	Galvanized Steel Frame
Insulation:	Xtreme Insulation
Control:	Balboa
Control Panel:	Spatouch
Water Pump:	2 x 3 HP + 2 x 2 HP
Circulation Pump:	Included
Ozonator:	Included
Water Drain:	Included
Filters:	2 x Papers Filters
Heater:	3 kW Balboa
Electrical Requirements:	400V / 3 x 20A

Counter Current System:	Riverstream Jets
UV Disinfection:	Included
LED Waterline Lighting:	Included
LED Underwater Lights:	Included
Shut-off Valves:	Included
Air/Water Regulator:	Included

Optional

- Tripower Counter Current System (2,400 l/min)
- Tornado Counter Current System (8-step frequency controlled)
- Fishing Pole
- Air Heat Pump
- Preparation for external access (e.g. Air Heat Pump)

THE DALLAS 59 STRIKES THE PERFECT BALANCE BETWEEN SIZE AND FUNCTIONALITY. SLIGHTLY SHORTER THAN THE DALLAS 75, BUT STILL SPACIOUS ENOUGH TO OFFER A COMPREHENSIVE SWIMMING AND WELLNESS EXPERIENCE. IT IS THE IDEAL CHOICE FOR THOSE WHO VALUE EFFICIENCY WITHOUT COMPROMISING ON QUALITY.

DALLAS 55

I-ZONE SWIMSPA

DETAILS DALLAS 55



Dimensions:	550 x 225 x 154 cm 217 x 89 x 61 inches
Empty Weight:	1.680 kg // 3.704 lbs
Water Capacity:	10.700 liters // 2.827 gal
Total Weight:	12.380 kg // 27.293 lbs
Cladding:	WPC Cabinet
Seats:	1
Loungers:	1
Water Jets:	19
Frame:	Galvanized Steel Frame
Insulation:	Xtreme Insulation
Control:	Balboa
Control Panel:	Spatouch
Water Pump:	2 x 3 HP + 2 x 2 HP
Circulation Pump:	Included
Ozonator:	Included
Water Drain:	Included
Filters:	2 x Papers Filters
Heater:	3 kW Balboa
Electrical Requirements:	400V / 3 x 20A

Counter Current System:	Riverstream Jets
UV Disinfection:	Included
LED Waterline Lighting:	Included
LED Underwater Lights:	Included
Shut-off Valves:	Included
Air/Water Regulator:	Included

Optional

- Tripower Counter Current System (2,400 l/min)
- Tornado Counter Current System (8-step frequency controlled)
- Fishing Pole
- Air Heat Pump
- Preparation for external access (e.g. Air Heat Pump)

MORE COMPACT THAN ITS LARGER COUNTERPARTS, THE DALLAS 55 OFFERS AN EXCELLENT OPTION FOR LIMITED SPACES WITHOUT SACRIFICING THE BENEFITS OF A COMBINED SWIMMING AND MASSAGE EXPERIENCE. IT IS SPECIFICALLY DESIGNED TO CREATE AN OASIS OF RELAXATION EVEN IN SMALLER GARDENS.

DALLAS 45

I-ZONE SWIMSPA

DETAILS DALLAS 45



Dimensions:	450 x 225 x 154 cm 177 x 89 x 61 inches
Empty Weight:	1.380 kg // 3.042 lbs
Water Capacity:	8.800 liters / 2.325 gal
Total Weight:	10.180 kg // 22.443 lbs
Cladding:	WPC Cabinet
Seats:	1
Loungers:	1
Water Jets:	19
Frame:	Galvanized Steel Frame
Insulation:	Xtreme Insulation
Control:	Balboa
Control Panel:	Spatouch
Water Pump:	2 x 3 HP + 2 x 2 HP
Circulation Pump:	Included
Ozonator:	Included
Water Drain:	Included
Filters:	2 x Papers Filters
Heater:	3 kW Balboa
Electrical Requirements:	400V / 3 x 20A

Counter Current System:	Riverstream Jets
UV Disinfection:	Included
LED Waterline Lighting:	Included
LED Underwater Lights:	Included
Shut-off Valves:	Included
Air/Water Regulator:	Included

Optional

- Tripower Counter Current System (2,400 l/min)
- Fishing Pole
- Air Heat Pump
- Preparation for external access (e.g. Air Heat Pump)

THE SMALLEST MODEL IN THE SERIES, THE DALLAS 45, IS IDEAL FOR INTIMATE SPACES OR AS AN ELEGANT ADDITION TO YOUR HOME. DESPITE ITS COMPACT SIZE, IT OFFERS A COMPLETE SWIMMING AND RELAXATION EXPERIENCE WITH ALL THE HALLMARK FEATURES OF THE DALLAS SERIES.

ÄTNA 75

I-ZONE SWIMSPA

DETAILS ÄTNA 75



Dimensions:	750 x 225 x 154 cm 295 x 89 x 61 inches
Empty Weight:	2.280 kg // 5.027 lbs
Water Capacity:	13.500 liters // 3.566 gal
Total Weight:	15.780 kg // 34.789 lbs
Cladding:	WPC Cabinet
Frame:	Galvanized Steel Frame
Insulation:	Xtreme Insulation
Control:	Balboa
Control Panel:	Spatouch
Water Pump:	3 x 3 HP
Circulation Pump:	Included
Ozonator:	Included
Water Drain:	Included
Filters:	2 x Papers Filters
Heater:	3 kW Balboa
Electrical Requirements:	400V / 3 x 20A

Counter Current System:	Riverstream Jets
UV Disinfection:	Included
LED Waterline Lighting:	Included
LED Underwater Lights:	Included
Shut-off Valves:	Included
Air/Water Regulator:	Included

Optional

- Tripower Counter Current System (2,400 l/min)
- Tornado Counter Current System (8-step frequency controlled)
- Air Heat Pump
- Preparation for external acces (e.g. Air Heat Pump)

THE ÄTNA 75 MODEL OFFERS THE LARGEST SWIMMING AREA FOR AN ULTIMATE TRAINING EXPERIENCE IN YOUR OWN GARDEN. WITH THE ADVANCED RIVER STREAM JETS, THE CURRENT CAN BE INDIVIDUALLY ADJUSTED FOR ANY SWIMMING LEVEL. IDEAL FOR AMBITIOUS ATHLETES AND FAMILIES WHO WANT TO SWIM AND TRAIN TOGETHER, THE ÄTNA 75 PROVES THAT EVEN PROFESSIONAL TRAINING SESSIONS ARE POSSIBLE AT HOME.

ÄTNA 59

I-ZONE SWIMSPA

DETAILS ÄTNA 59



Dimensions:	590 x 225 x 154 cm 232 x 89 x 61 inches
Empty Weight:	1.800 kg // 3.968 lbs
Water Capacity:	11.500 liters // 3.038 gal
Total Weight:	13.300 kg // 29.322 lbs
Cladding:	WPC Cabinet
Frame:	Galvanized Steel Frame
Insulation:	Xtreme Insulation
Control:	Balboa
Control Panel:	Spatouch
Water Pump:	3 x 3 HP
Circulation Pump:	Included
Ozonator:	Included
Water Drain:	Included
Filters:	2 x Papers Filters
Heater:	3 kW Balboa
Electrical Requirements:	400V / 3 x 20A

Counter Current System:	Riverstream Jets
UV Disinfection:	Included
LED Waterline Lighting:	Included
LED Underwater Lights:	Included
Shut-off Valves:	Included
Air/Water Regulator:	Included

Optional

- Tripower Counter Current System (2,400 l/min)
- Tornado Counter Current System (8-step frequency controlled)
- Fishing Pole
- Air Heat Pump
- Preparation for external access (e.g. Air Heat Pump)

ALSO AVAILABLE AS *Basic* VERSION

THE ÄTNA 59 COMBINES COMFORTABLE DIMENSIONS WITH POWERFUL COUNTER-CURRENT TECHNOLOGY, MAKING IT THE PERFECT TRAINING PARTNER FOR REGULAR SWIMMERS. WHETHER FOR IMPROVING FITNESS OR FOR A RELAXING BREAK, THE VARIABLE FLOW STRENGTH ADAPTS TO ANY NEED. AN EXCELLENT MIDDLE GROUND FOR THOSE WHO WANT TO SAVE SPACE WITHOUT COMPROMISING ON QUALITY.

ÄTNA 55

I-ZONE SWIMSPA

DETAILS ÄTNA 55



Dimensions:	550 x 225 x 154 cm 217 x 89 x 61 inches
Empty Weight:	1.680 kg // 3.704 lbs
Water Capacity:	10.700 liters // 2.827 gal
Total Weight:	12.380 kg // 27.293 lbs
Cladding:	WPC Cabinet
Frame:	Galvanized Steel Frame
Insulation:	Xtreme Insulation
Control:	Balboa
Control Panel:	Spatouch
Water Pump:	3 x 3 HP
Circulation Pump:	Included
Ozonator:	Included
Water Drain:	Included
Filters:	2 x Papers Filters
Heater:	3 kW Balboa
Electrical Requirements:	400V / 3 x 20A

Counter Current System:	Riverstream Jets
UV Disinfection:	Included
LED Waterline Lighting:	Included
LED Underwater Lights:	Included
Shut-off Valves:	Included
Air/Water Regulator:	Included

Optional

- Tripower Counter Current System (2,400 l/min)
- Tornado Counter Current System (8-step frequency controlled)
- Fishing Pole
- Air Heat Pump
- Preparation for external access (e.g. Air Heat Pump)

IDEAL FOR SMALLER GARDENS, THE ÄTNA 55 OFFERS AN IMPRESSIVE BALANCE BETWEEN COMPACT SIZE AND A FULL SWIMMING EXPERIENCE. THE COUNTER-CURRENT SYSTEM ALLOWS FOR EFFECTIVE SWIM TRAINING WITHOUT THE NEED FOR LONG TRIPS TO A PUBLIC POOL. IT IS THE PERFECT CHOICE FOR SWIMMING ENTHUSIASTS WHO WANT TO USE SPACE EFFICIENTLY WITHOUT COMPROMISING ON PERFORMANCE.

ÄTNA 45

I-ZONE SWIMSPA

DETAILS ÄTNA 45



Dimensions:	450 x 225 x 154 cm 177 x 89 x 61 inches
Empty Weight:	1.380 kg // 3.042 lbs
Water Capacity:	8.800 liters // 2.325 gal
Total Weight:	11.560 kg // 25.485 lbs
Cladding:	WPC Cabinet
Frame:	Galvanized Steel Frame
Insulation:	Xtreme Insulation
Control:	Balboa
Control Panel:	Spatouch
Water Pump:	3 x 3 HP
Circulation Pump:	Included
Ozonator:	Included
Water Drain:	Included
Filters:	2 x Papers Filters
Heater:	3 kW Balboa
Electrical Requirements:	400V / 3 x 20A

Counter Current System:	Riverstream Jets
UV Disinfection:	Included
LED Waterline Lighting:	Included
LED Underwater Lights:	Included
Shut-off Valves:	Included
Air/Water Regulator:	Included

- Optional**
- Tripower Counter Current System (2,400 l/min)
 - Fishing Pole
 - Air Heat Pump
 - Preparation for external access (e.g. Air Heat Pump)

THE ÄTNA 45 IS THE SOLUTION FOR VERY LIMITED OUTDOOR SPACES WHERE EVERY CENTIMETER COUNTS. DESPITE ITS COMPACT DIMENSIONS, IT ALLOWS FOR PROFESSIONAL SWIM TRAINING THANKS TO THE ADJUSTABLE RIVER STREAM JETS. THIS MODEL IS PERFECT FOR INDIVIDUALS OR COUPLES WHO WANT TO REALIZE THE DREAM OF HAVING THEIR OWN SWIM CHANNEL IN THE SMALLEST POSSIBLE SPACE.



SWIMSPAS 2-ZONES

SWIMMING AND RELAXING AT THE SAME TIME – IN AN EXCLUSIVE WAY

Two-zone SwimSpas offer the best of both worlds. Whether you seek relaxation in the hot tub after a long day or prefer to reduce stress through swim training, the independently adjustable areas provide both simultaneously. This is the ultimate combination of sport and wellness.



Vesuv II



Fuego



Novara



Kilimanjaro

FUEGO

2-ZONES SWIMSPA

DETAILS FUEGO



THIS SWIMSPA RAISES THE BAR FOR COMFORT AND RELAXATION IN YOUR OWN GARDEN TO AN ENTIRELY NEW LEVEL. A FULL-FEATURED HOT TUB PAMPERS YOU WITH ALL THE FINESSES, WHILE THE CHILDREN ENJOY THEMSELVES IN THE ALMOST 4-METER-LONG SWIMMING AREA. TWO TOUCH DISPLAYS PROVIDE EASY CONTROL OF THE SEPARATE AREAS.

Dimensions:	590 x 235 x 154 cm 232 x 93 x 61 inches
Empty Weight:	1.450 kg // 3.197 lbs
Water Capacity:	11.500 liters // 3.038 gal
Total Weight:	12.950 kg // 28.550 lbs
Cladding:	WPC Cabinet
Seats:	3
Loungers:	1
Water Jets:	28
Frame:	Galvanized Steel Frame
Insulation:	Xtreme Insulation
Control:	Balboa
Control Panel:	Spatouch
Water Pump:	5 x 3 HP
Circulation Pumps:	2 x Included
Ozonator:	Included
Water Drain:	Included
Filters:	3 x Papers Filters
Heater:	2 x 3 kW Balboa
Electrical Requirements:	2 x 400V / 3 x 20A

Counter Current System:	Riverstream Jets
UV Disinfection:	Included
LED Waterline Lighting:	Included
LED Underwater Lights:	Included
Shut-off Valves:	Included
Air/Water Regulator:	Included

- Optional**
- Airblower & Aromatherapy
 - Tornado Counter Current System (4,680 l/min - 8-stage frequency-controlled)
 - Fishing Pole
 - Air Heat Pump
 - Preparation for external access (e.g. Air Heat Pump)

ALSO AVAILABLE AS *Basic* VERSION

VESUV II

2-ZONES SWIMSPA

DETAILS VESUV II



Dimensions:	590 x 235 x 154 cm 232 x 93 x 61 inches
Empty Weight:	1.450 kg // 3.197 lbs
Water Capacity:	11.500 liters // 3.038 gal
Total Weight:	12.950 kg // 28.550 lbs
Cladding:	WPC Cabinet
Seats:	2
Loungers:	1
Water Jets:	25
Frame:	Galvanized Steel Frame
Insulation:	Xtreme Insulation
Control:	Balboa
Control Panel:	Spatouch
Water Pump:	4 x 3 HP
Circulation Pumps:	2 x Included
Ozonator:	Included
Water Drain:	Included
Filters:	3 x Papers Filters
Heater:	2 x 3 kW Balboa
Electrical Requirements:	2 x 400V / 3 x 20A

Counter Current System:	Riverstream Jets
UV Disinfection:	Included
LED Waterline Lighting:	Included
LED Underwater Lights:	Included
Shut-off Valves:	Included
Air/Water Regulator:	Included

Optional

- Airblower & Aromatherapy
- Tornado Counter Current System (4,680 l/min - 8-stage frequency-controlled)
- Fishing Pole
- Air Heat Pump
- Preparation for external access (e.g. Air Heat Pump)

ALSO AVAILABLE AS *Basic* VERSION

THE VESUV 2 MODEL IS THE WORTHY SUCCESSOR TO OUR POPULAR 2-ZONE SWIMSPA VESUV. THE PROVEN LAYOUT OF THE VESUV SWIMSPA HAS BEEN RETAINED AND COMBINED WITH THE LATEST HIGH-END TECHNOLOGY. TAKE ADVANTAGE OF THE TWO ZONES FOR RELAXATION OR YOUR PERSONAL SWIM TRAINING. UV DISINFECTION, OZONATOR, LED LIGHTS, AND THE POWERFUL COUNTER-CURRENT SYSTEM MAKE THIS SWIMSPA TRULY „STATE OF THE ART.“

NOVARA

2-ZONES SWIMSPA

DETAILS NOVARA



OUR NOVARA MODEL - THE GIANT AMONG SWIMSPAS. EQUIPPED WITH A HOT TUB FOR UP TO 5 PEOPLE AND A SWIMMING AREA APPROXIMATELY 4 METERS LONG, THIS SWIMSPA LEAVES NOTHING TO BE DESIRED.

Dimensions:	580 x 238 x 138 cm 228 x 94 x 54 inches
Empty Weight:	2.100 kg // 4.630 lbs
Water Capacity:	10.043 liters // 2.653 gal
Total Weight:	12.143 kg // 26.771 lbs
Cladding:	WPC Cabinet
Seats:	3
Loungers:	2
Water Jets:	69
Frame:	Galvanized Steel Frame
Insulation:	Xtreme Insulation
Control:	Balboa
Control Panel:	Balboa
Water Pump:	5 x 3 HP
Circulation Pumps:	2 x Included
Ozonator:	Included
Water Drain:	Included
Filters:	3 x Papers Filters
Heater:	2 x 3 kW Balboa
Electrical Requirements:	2 x 400V / 3 x 20A

Counter Current System:	Riverstream Jets
UV Disinfection:	Included
LED Waterline Lighting:	Included
LED Underwater Lights:	Included
Shut-off Valves:	Included
Air/Water Regulator:	Included

- Optional**
- Airblower & Aromatherapy
 - Tornado Counter Current System (4,680 l/min - 8-stage frequency-controlled)
 - Fishing Pole
 - Air Heat Pump
 - Preparation for external access (e.g. Air Heat Pump)

ALSO AVAILABLE AS *Basic* VERSION

KILIMANJARO

2-ZONES SWIMSPA

DETAILS KILIMANJARO



Dimensions:	900 x 220 x 150 cm 354 x 87 x 59 inches
Empty Weight:	2.100 kg // 4.630 lbs
Water Capacity:	18.500 liters // 4.887 gal
Total Weight:	20.600 kg // 45.415 lbs
Cladding:	WPC Cabinet
Seats:	4
Loungers:	1
Water Jets:	40
Frame:	Galvanized Steel Frame
Insulation:	Xtreme Insulation
Control:	Balboa
Control Panel:	Balboa
Water Pump:	5 x 3 HP + 1 x 1 HP
Circulation Pumps:	2 x Included
Ozonator:	Included
Water Drain:	Included
Filters:	3 x Papers Filters
Heater:	2 x 3 kW Balboa
Electrical Requirements:	2 x 400V / 3 x 20A

Counter Current System:	Riverstream Jets
UV Disinfection:	Included
LED Waterline Lighting:	Included
LED Underwater Lights:	Included
Water Fountains:	Included
Shut-off Valves:	Included
Air/Water Regulator:	Included

Optional

- Tornado Counter Current System (4,680 l/min - 8-stage frequency-controlled)
- Fishing Pole
- Air Heat Pump
- Preparation for external access (e.g. Air Heat Pump)

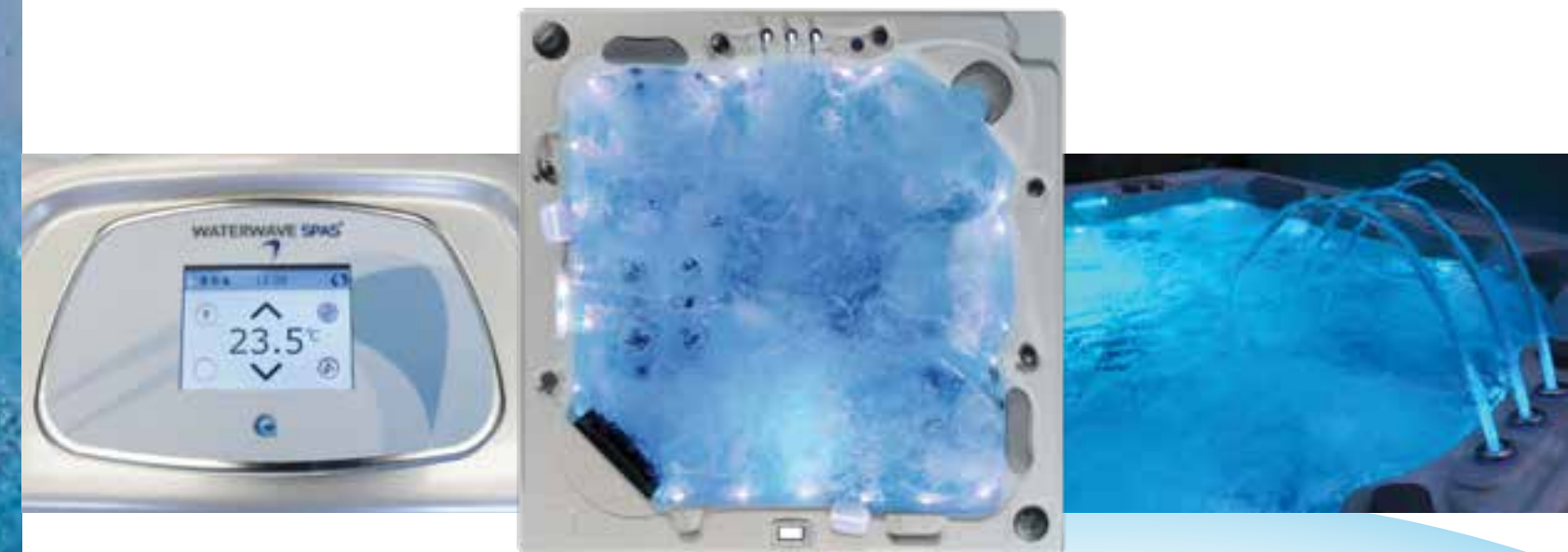
SPORTING ACTIVITIES AND ENJOYABLE WELLNESS HOURS WITH DIFFERENT WATER TEMPERATURES IN A SINGLE POOL – IS THAT POSSIBLE? THE LATEST HIGHLIGHT FROM WATERWAVE SWIMSPAS, THE KILIMANJARO, MAKES IT POSSIBLE. REFRESH YOURSELF IN THE 7-METER-LONG SWIMMING AREA OR RELAX IN THE SEPARATE HOT TUB, ACCOMMODATING UP TO 5 PEOPLE.



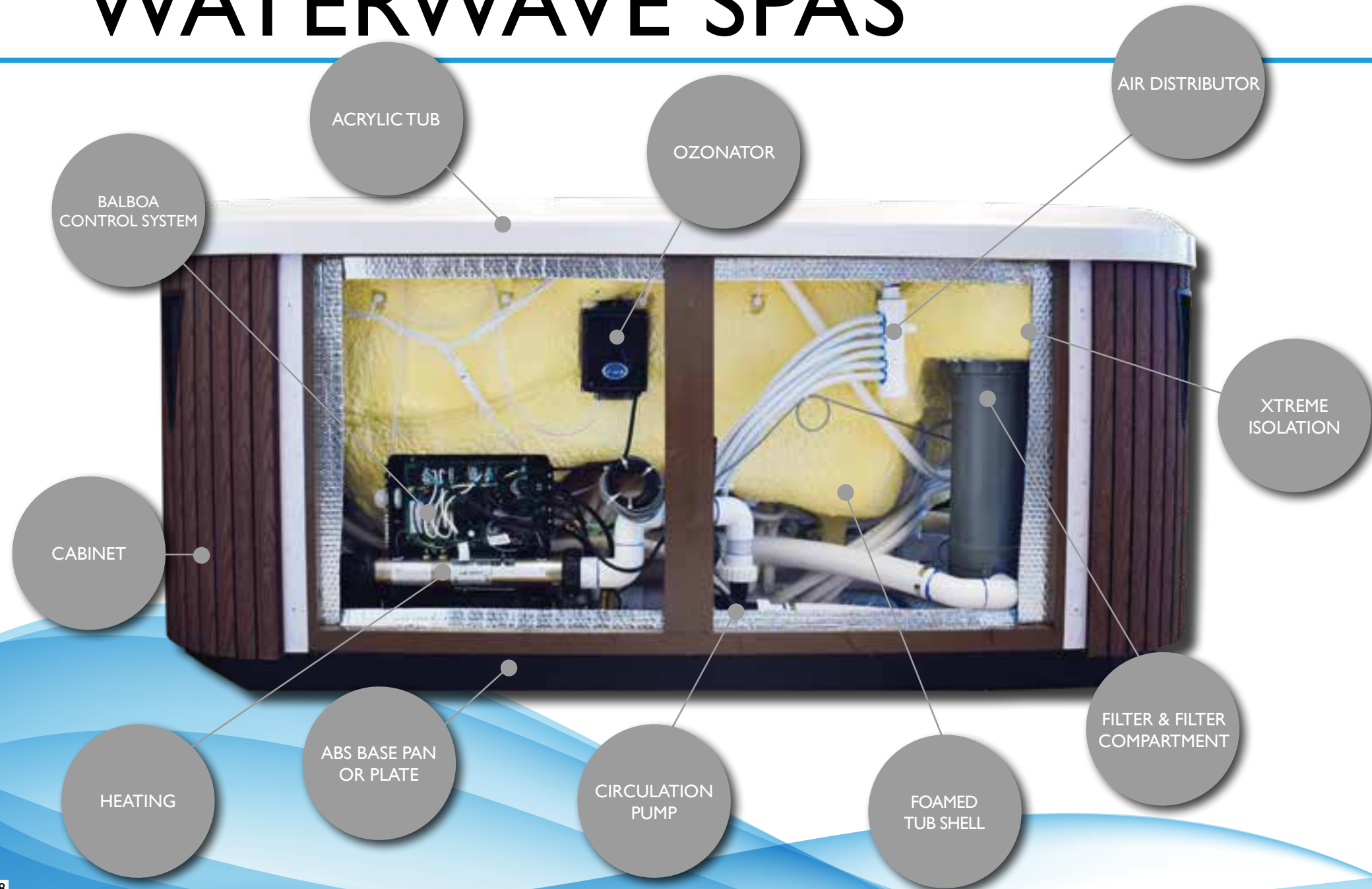
TECHNOLOGY & FEATURES

WHAT YOUR POOL CAN DO – FIND OUT HERE

How is my pool built? What options do I have, and what do they look like? Which colors can I choose from? Find answers to all these questions here. In addition to an extremely stable base construction and high-quality insulation, Waterwave Spas offer many other features that contribute to a maximum bathing experience. Enjoy your favorite music or enchant your senses with various light, color, and aroma options.



WATERWAVE SPAS



TECHNOLOGY

STATE-OF-THE-ART TECHNOLOGY

Waterwave Spas exclusively use technical components from renowned manufacturers in the hot tub industry. Balboa, Aristech, Waterway, and Gecko are just a few of them. Cutting-edge technology you can rely on, even with daily use. Our factory customer service is well-trained to handle all technical challenges.

BALBOA
water group

ARISTECH
ACRYLICS

Waterway

GECKO®



WATERWAVE SPAS



FEATURES

OUR FEATURES TAILORED TO YOUR NEEDS

Because everyone has different requirements for their perfect spa, we offer many different models with various features and configurations. Some features are standard, while others, like our Waterwave Spas Sound System, can be added as optional features when you purchase your Waterwave Spa. Choose the features that suit you best to tailor your wellness experience precisely to your needs.

Enjoy top-level wellness at home. Waterwave Spas features make it possible.

All features are tested with the utmost care and technical expertise by our service technicians in advance.



WATERWAVE SPAS

OUR EXTERIOR CLADDINGS

At Waterwave Spas®, your expert in hot tubs and SwimSpas, your individual wellness experience is especially important to us. We understand that design and personalization play a crucial role in transforming your home into an oasis of relaxation. That's why we offer an exclusive selection of cladding options, allowing you to customize your spa to your personal style and seamlessly integrate it into the aesthetic requirements of your home.

Our claddings are distinguished by a combination of high-quality materials, elegant and modern designs, and robust, durable construction. Our goal is to seamlessly blend aesthetics and functionality to ensure a low-maintenance and stylish appearance. When selecting our cladding options, we place great emphasis on ensuring that each solution reflects the variety and quality for which Waterwave Spas® is known. From contemporary designs that enhance any outdoor area to more traditional options that promise durability and elegance, we give you the freedom to design your spa area exactly to your liking.

PREMIUM CABINET



Premium Dark Grey

DESIGN CABINET



Design Brown



Design Grey

WAVE SELECT CABINET



Light Oak



Moccha



Smoke Grey

STANDARD CABINET



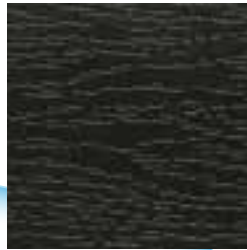
Dark Brown



Light Grey



Dark Grey



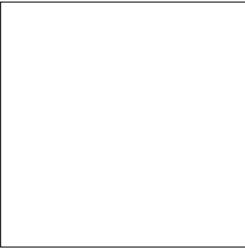
Black

CLADDING & COLORS

TUB COLORS – GIVE YOUR SPA A PERSONAL TOUCH

At Waterwave Spas®, the individuality of our customers is paramount. We place great emphasis on ensuring that you can experience your hot tub or SwimSpa not only as a place of relaxation but also as an expression of your personal style. Our high-quality acrylic tub shells are the heart of every spa and are manufactured using a special vacuum forming process that guarantees quality and durability.

These tub shells stand out with their appealing surfaces, available in various colors to suit every taste and preference. The use of top-quality components and a well-thought-out base structure ensure that your tub shell will remain a highlight in your home for many years to come. Whether you choose a classic color that exudes timelessness and elegance or opt for a bolder tone that reflects your personal style – at Waterwave Spas®, you will find the perfect color to give your wellness oasis a personal touch.



Pure White



Silver Marble



White Pearl



Gypsum



Sahara



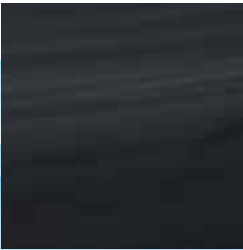
Mediterranean Sunset



Ocean Wave



Summer Sapphire



Midnight Opal

WATERWAVE SPAS

THERMOCOVER - EFFICIENCY AND PROTECTION FOR YOUR HOT TUB

In every hot tub from Waterwave Spas®, there is not only excellent quality but also a promise of long-lasting relaxation and comfort. A key part of this promise is our high-quality thermocover, specially crafted for your hot tub from durable vinyl. In our Elite & Design series, covers with a thickness of up to 15cm are used.

The thermocover is carefully designed to effectively retain heat in the hot tub, ensuring an optimal water temperature. Additionally, it provides reliable protection against dirt, reducing not only cleaning time but also contributing to the longevity of your hot tub.

Compatibility is important to us, which is why our thermocover is perfectly tailored to all cover lifter solutions from our extensive product range. This enables easy and convenient handling, allowing you to spend more time enjoying your hot tub and less time maintaining it.



SWIM SPA COVER - ECONOMY: SIMPLE AND EFFECTIVE COVER SOLUTION

The Economy Swim Spa Cover provides an uncomplicated and efficient way to protect your swim spa. Designed for easy handling, this cover can be effortlessly rolled over your spa and securely fastened with elastic straps. This simple action keeps your swim spa free from dirt and minimizes heat loss, helping you save energy and maintain water quality. Each Economy Swim Spa Cover is custom-made according to your specifications to ensure a perfect fit for your swim spa. Through this personalized customization, we offer a solution that is not only practical in application but also effective in protecting your swim spa.



COVERS & LIFTERS

LIFTERS FOR HOT TUBS & SWIM SPAS

A lifter for hot tubs and swim spas is an essential accessory for any spa owner who values comfort and efficiency. These handy devices are designed to effortlessly lift and lower the covers of hot tubs and swim spas, significantly easing access to your relaxation area.

By using a lifter, the effort required to move the cover is greatly reduced. With a lifter, you can handle your spa cover without physical strain or assistance from others. Not only is this convenient, but it also reduces the risk of damage to the spa and cover.

Another significant advantage of a lifter is the space-saving storage of the cover while using the hot tub or swim spa. Instead of laying the cover on the ground where it could collect dirt or be damaged, the lifter securely holds it in a raised position, keeping it safe and clean. This protects the cover from wear and tear, extending its lifespan.

Lifters are available in various designs, differing in their mounting method, opening system, and materials used. Many lifter models are designed to require minimal space behind or beside the spa to function effectively, making them an ideal solution for tight or complicated installation locations. The robust construction of such systems ensures long-term use and stability, even with frequent use.

Overall, lifter systems not only improve the user-friendliness and accessibility of your hot tub or swim spa but also protect your investment in the spa cover and contribute to a smooth, enjoyable spa experience.



WATERWAVE SPAS

STEPS FOR HOT TUBS AND SWIM SPAS: SAFETY AND ELEGANCE COMBINED

A high-quality set of steps is an essential accessory for any hot tub or swim spa. Our collection of steps includes various models that are not only functional but also aesthetically pleasing. To ensure a harmonious appearance, we perfectly match the color of each step to the selected cladding of your hot tub.

Crafted from sturdy and durable material, our steps withstand both UV radiation and daily wear and tear. The non-slip surfaces ensure safe and effortless entry and exit, making them particularly user-friendly for both children and adults.

Discover the perfect steps for your hot tub or swim spa at Waterwave Spas® and experience how such a simple accessory can safely and stylishly enhance your access to unforgettable wellness moments.



WAVE SELECT STEP

An exclusive cladding deserves an equally beautiful step. You've chosen the Wave Select cladding for your hot tub? Then this step is the perfect complement, matching in color and material to the Wave Select cladding.



STANDARD STEP

The classic two-step staircase serves as an entry aid for your hot tub or swim spa. The color of the step always perfectly matches the selected cladding. Three different color variants are possible.

STEPS & ACCESSORIES

EXPLORE THE WATERWAVE SPAS® ONLINE SHOP: YOUR HUB FOR ACCESSORIES, WATER CARE, AND SPARE PARTS

To provide our customers with a worry-free and fulfilling wellness experience, we at Waterwave Spas® have launched our own online shop. Our goal is to offer you a comprehensive range of accessories, water care products, and spare parts for hot tubs and swim spas conveniently from one source.

In the Waterwave Spas® online shop, you'll find a carefully curated collection of products that will enhance your hot tub or swim spa experience. From planning your next pool party with floating drink holders to searching for various spare parts – our range covers all your needs. We prioritize quality and therefore only offer items from reputable manufacturers to ensure the best possible quality and reliability for you.

Discover the diversity of our offerings in the Waterwave Spas® online shop and enjoy the convenience of finding everything you need for the perfect spa experience with just a few clicks. Have your selection conveniently delivered to your home and immerse yourself in the world of relaxation with Waterwave Spas®. Visit us now and experience the difference.





MASSAGES

THE SPECIALTIES OF OUR MASSAGES

At Waterwave Spas®, we believe that a hot tub should be more than just a place of relaxation. It's an oasis of regeneration that revitalizes both body and mind through the power of massage. Our hot tubs offer you a variety of massage options, each with its specific benefits, to meet your personal wellness needs. Discover which massage suits you best and experience well-being at a new level.

THE VARIETY OF OUR MASSAGES

Every Waterwave Spa is equipped with a range of massage features aimed at targeting various areas of your body. From gentle wave massages that release minor tensions to powerful jet massages that penetrate deep into the muscles, to special foot massages that stimulate reflex zones – our hot tubs are true masters of relaxation. The combination of warmth and targeted water jet massage promotes circulation, relieves pain and muscle soreness, and supports the body's natural detoxification process.

THE BENEFITS OF MASSAGE WITH A WATERWAVE SPA

Regular use of a Waterwave Spa hot tub and its diverse massage options offers numerous health benefits. Massages help to reduce stress and tension, improve sleep, and enhance overall well-being. Moreover, they are effective in relieving pain associated with chronic conditions such as back pain, arthritis, and fibromyalgia. The gentle movement of the water combined with warmth and massages also promotes mental relaxation and helps to leave everyday stress behind.

WATERWAVE SPAS

RELAXATION AND WELL-BEING: THE ART OF MASSAGE IN HOT TUBS

In our hot tubs, you experience massages that not only aim for relaxation but are also tailored to your health and ergonomic needs. Each jet in our hot tubs is finely adjustable, allowing you to customize the water pressure to your preferences and needs. The strategic arrangement of the jets is the result of extensive research and is specifically designed to target body zones for maximum relaxation and therapeutic effects.

Whether you're seeking regeneration after physical activity, need support in alleviating joint pain, or simply want to take a break from everyday life – our hot tubs offer the perfect massage for every need. Experience the soothing power of water, which not only relaxes your body but also calms your mind and promotes overall well-being.



Discover Our Hydrospeed Massage

We offer the Waterwave Spas Hydrospeed Massage, providing variably controllable massages for seating or reclining areas. You'll experience the best hydrotherapy experience through the synergy of powerful pumps, solenoid valves, and excellently engineered massage jets. You can conveniently adjust the massages with the separate control unit.

The water flow is controlled by turning the solenoid valve on and off. The massage intensity of the jets can be individually regulated. For severe tensions, the Waterwave Spas Hydrospeed Massage can help provide relief where conventional water pressure is no longer sufficient.

The Hydrospeed Massage is one of the many innovative highlights awaiting you in spas from our Elite series.



MASSAGES & JETS



DIRECTIONAL JET

These jets can be individually adjusted, allowing you to target specific areas of the body with a powerful, direct water jet massage. Ideal for targeted relief of tension.



NECK JET

Specially designed for the sensitive neck area, Neck Jets provide a gentle yet effective massage to relieve tension in this area. Ideal for relaxing the neck muscles after a long day.



SINGLE ROTO JET

The Single Roto Jet generates a rotating water jet, providing a dynamic, swirling massage. Perfect for revitalizing tired muscles and inducing gentle deep relaxation.



AIR JET

Air Jets create a gentle massage through thousands of air bubbles that bead around the body. This type of massage stimulates the skin and provides a tingling relaxation experience that invigorates the senses.



DOUBLE ROTO JET

With two rotating jets, the Double Roto Jet doubles the effect by delivering an intense, circular massage. This promotes circulation and helps loosen deep muscle tension.



OZON JET

Ozone Jets enrich the water with ozone. This contributes to the cleaning and clarification of the water by effectively reducing organic impurities and bacteria.





WATERWAVE SPAS®

WELLNESS AT THE HIGHEST LEVEL



WATERWAVE-SPAS.COM

A&A SOLUTIONS srl
Via B. Croce, 13 - UDINE
Tel. 392-8772425 info@aeasolutions.it

WWW.AEASOLUTIONS.IT

Visit Online

